



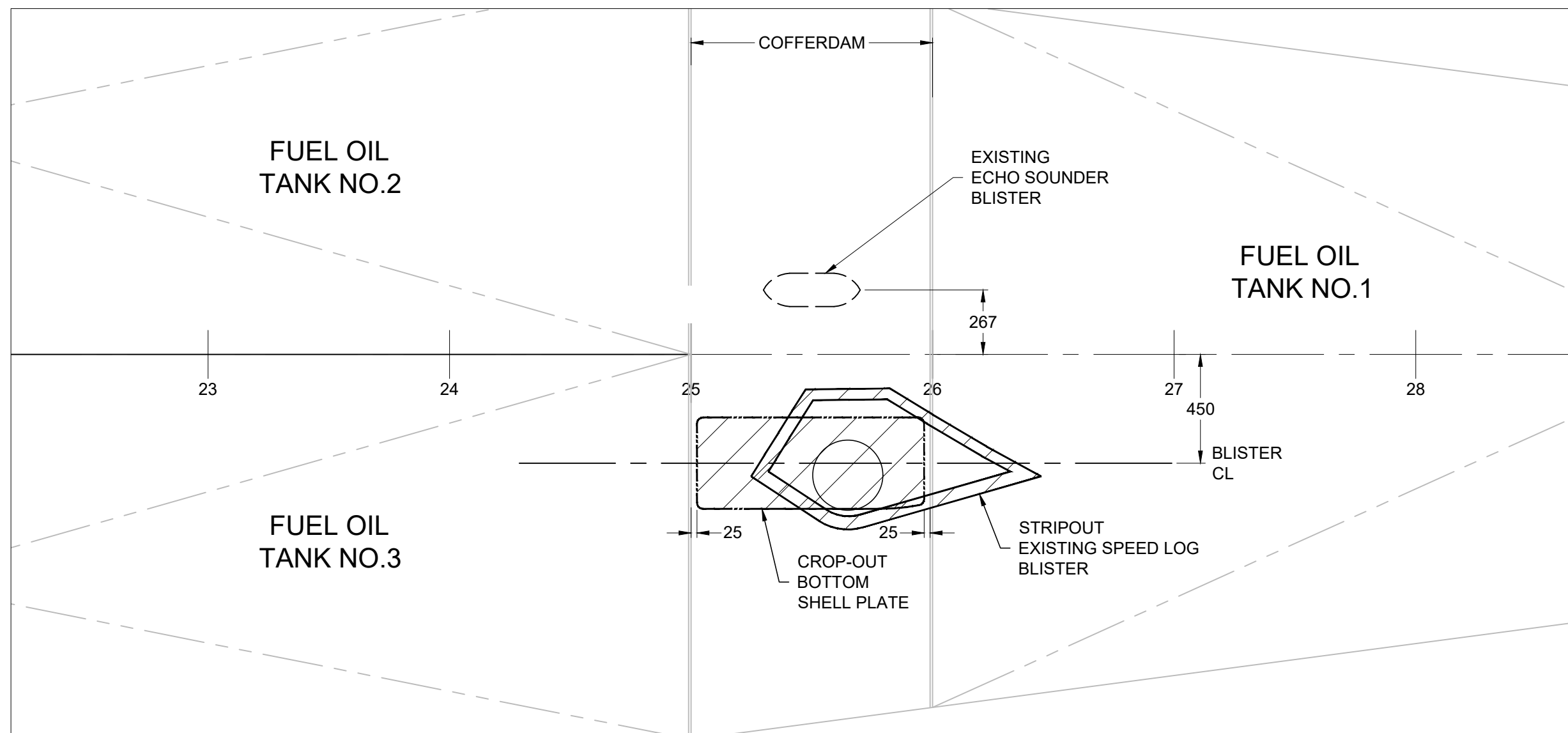
Vendor Information / Sous-traitant

NOTES:

1. ALL DIMENSIONS IN MM UNO
2. ALL MATERIAL LR GRADE A STEEL (OR EQUAL) UNO
3. ALL WELDING TO BE IN ACCORDANCE WITH CSA CWB W.59 STANDARDS
4. ALL WELDS TO BE GROUND SMOOTH
5. BOTTOM OF TRANSDUCER BLISTER IS TO BE FLAT WITH ZERO CONCAVITY, MAXIMUM 3mm CONVEXITY.
6. ALL TRANSDUCER CABLES TO BE ROUTED IN WATERTIGHT STEEL CONDUIT FROM THE HULL PENETRATION TO ABOVE THE VESSEL WATERLINE. MULTIPLE CABLES MAY BE ROUTED IN A SINGLE CONDUIT. MINIMUM CONDUIT WALL THICKNESS 6mm (4.5mm IF GALVANISED). REFER TO INSTALLATION MANUALS FOR GUIDANCE.
7. REMOVE (200mm) FLANGE FOR EXISTING SPERRY SPEED LOG AND INSTALL INSERT PLATE OVER FLANGE PENETRATION.

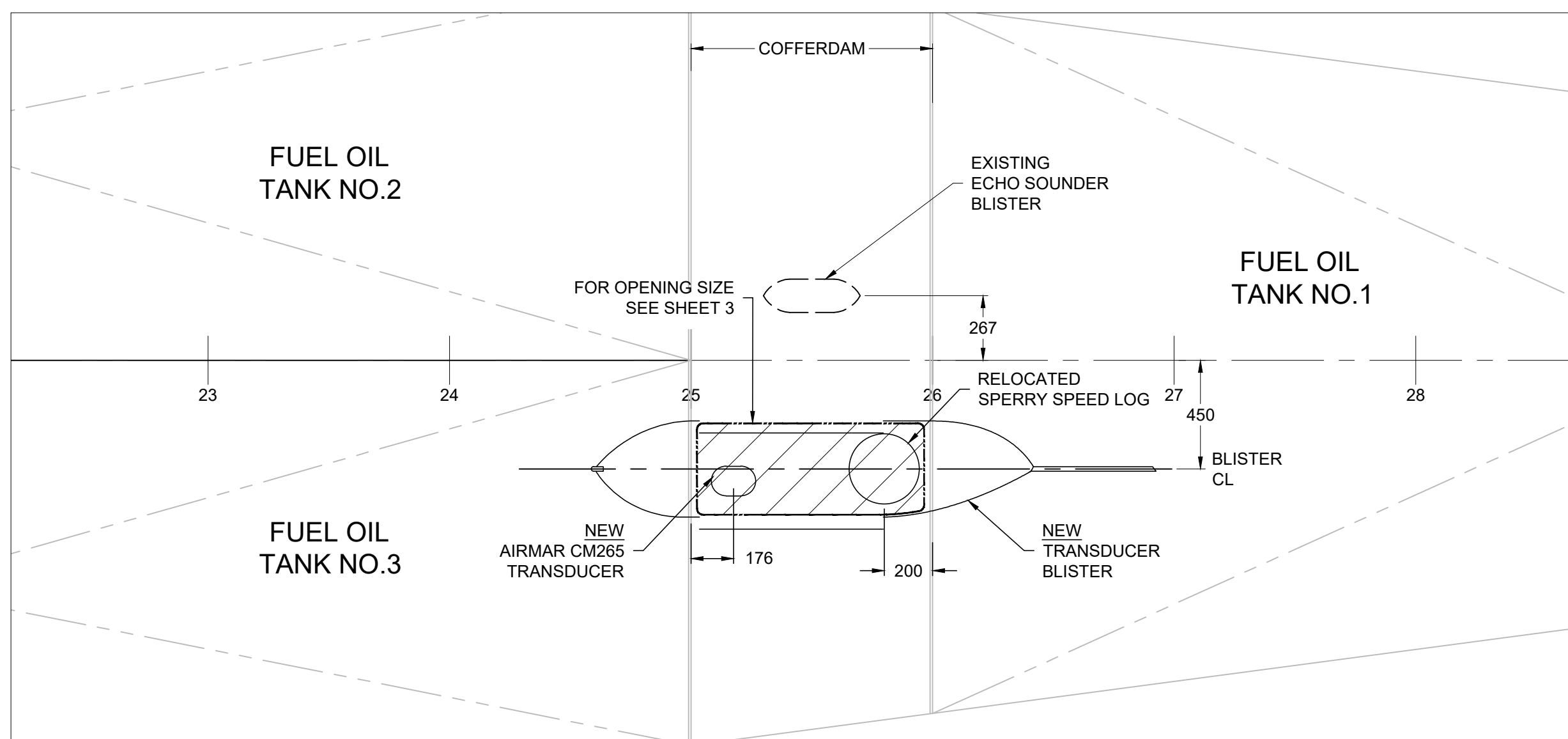
STRIP OUT

D



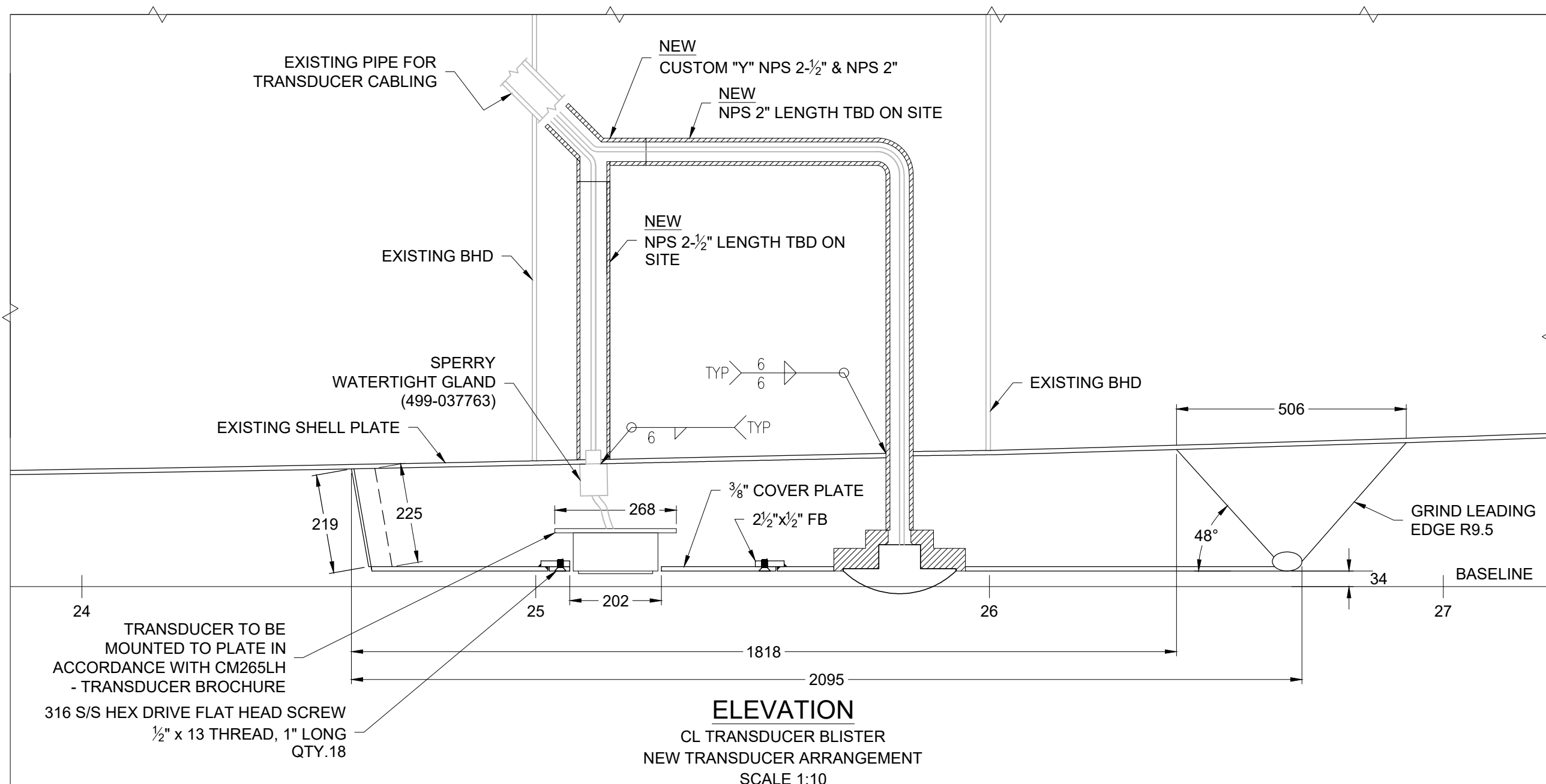
STRIP-OUT
PLAN BOTTOM SHELL
EXISTING TRANSDUCER ARRANGEMENT
SCALE 1:20

C



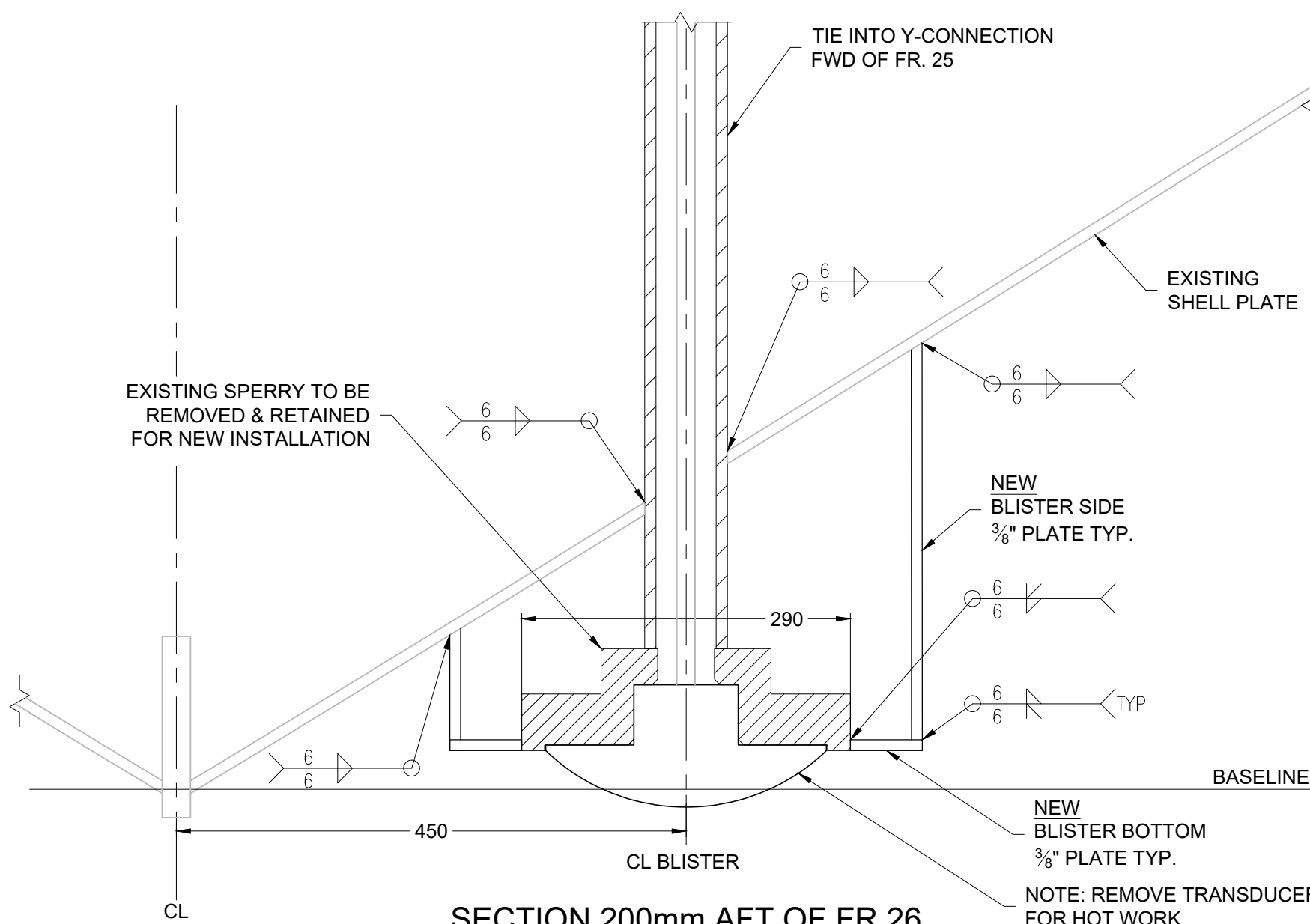
NEW DESIGN
PLAN BOTTOM SHELL
NEW TRANSDUCER ARRANGEMENT
SCALE 1:20

B

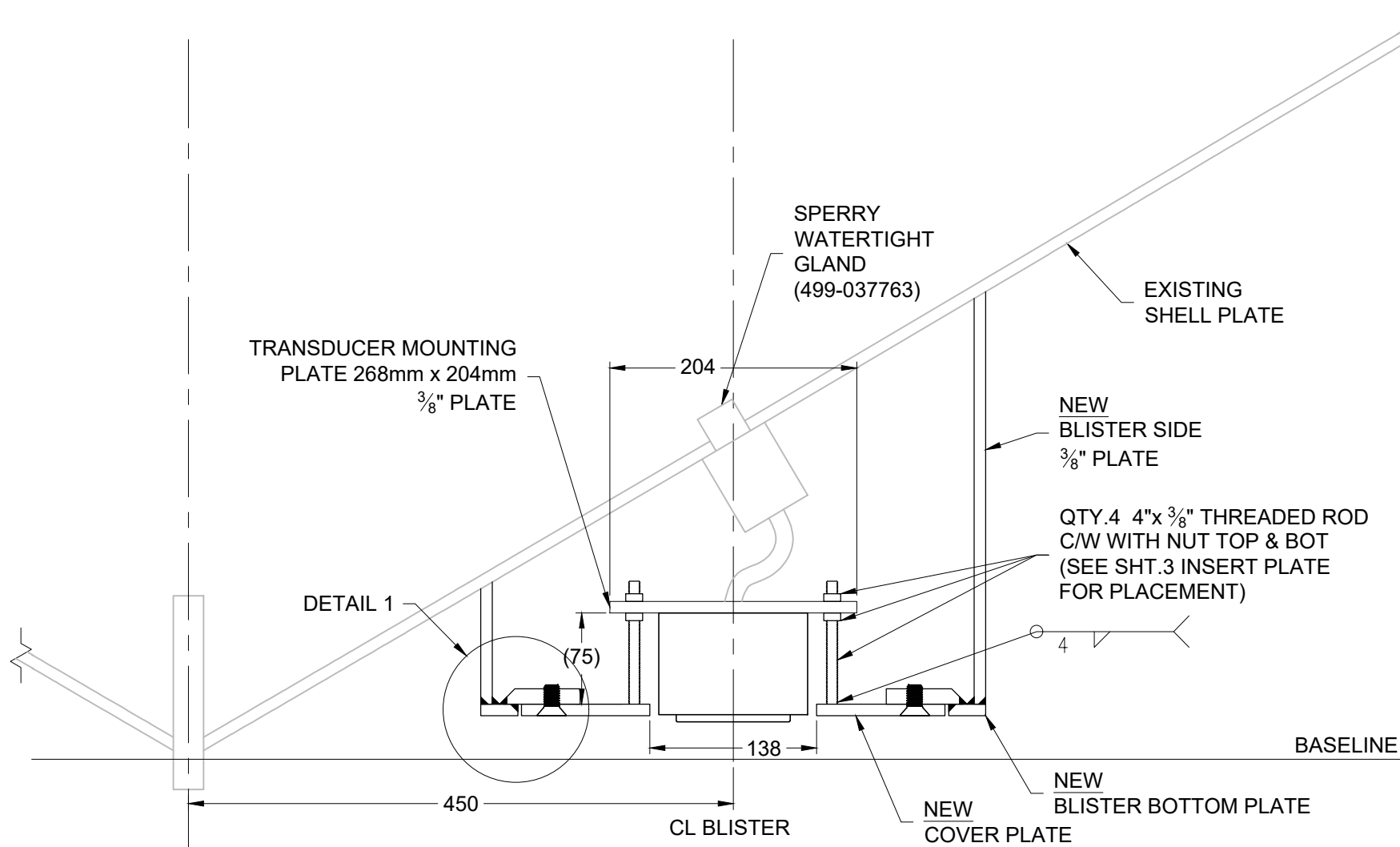


ELEVATION
CL TRANSDUCER BLISTER
NEW TRANSDUCER ARRANGEMENT
SCALE 1:10

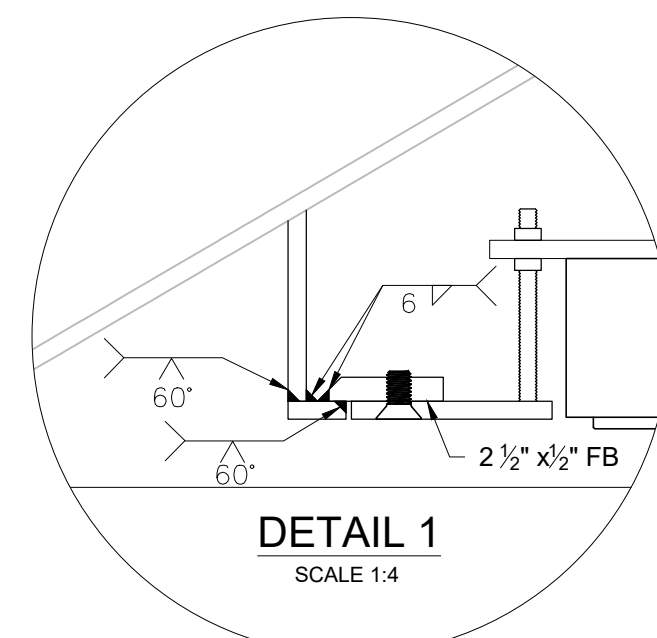
A



SECTION 200mm AFT OF FR.26
RELOCATED SPERRY SPEED LOG SENSOR
LOOKING FWD
SCALE 1:5



SECTION 176mm FWD OF FR.25
NEW CM265 WET BOX/ TANK-MOUNT
LOOKING FWD
SCALE 1:5



DETAIL 1
SCALE 1:4



0 INITIAL ISSUE AS 2018-12-18

rev description by date

Asset - Actif

CCGS MSPV

TRANSDUCER BLISTER

Drawing - Dessin

TRANSDUCER BLISTER
OVERVIEW

designed - conception date

3GA MARINE LTD 2018-12-18

drawn - dessiné date

AS 2018-12-18

checked - vérifié date

IGM 2018-12-18

approved - approuvé date

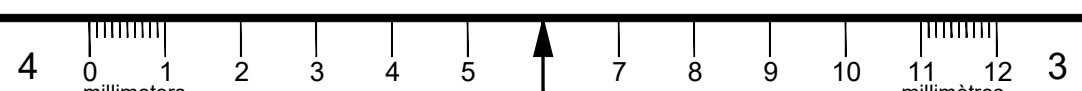
DM 2018-12-18

CCG ref. no. - no. réf. GCC

F1782-181444 AS NOTED

drawing no. - no. dessin sheet-feuille rev-rév

18-48-428-01 01/03 0

[illegible]



Fisheries and Oceans
Canada

Pêches et Océans
Canada

Canadian
Coast Guard

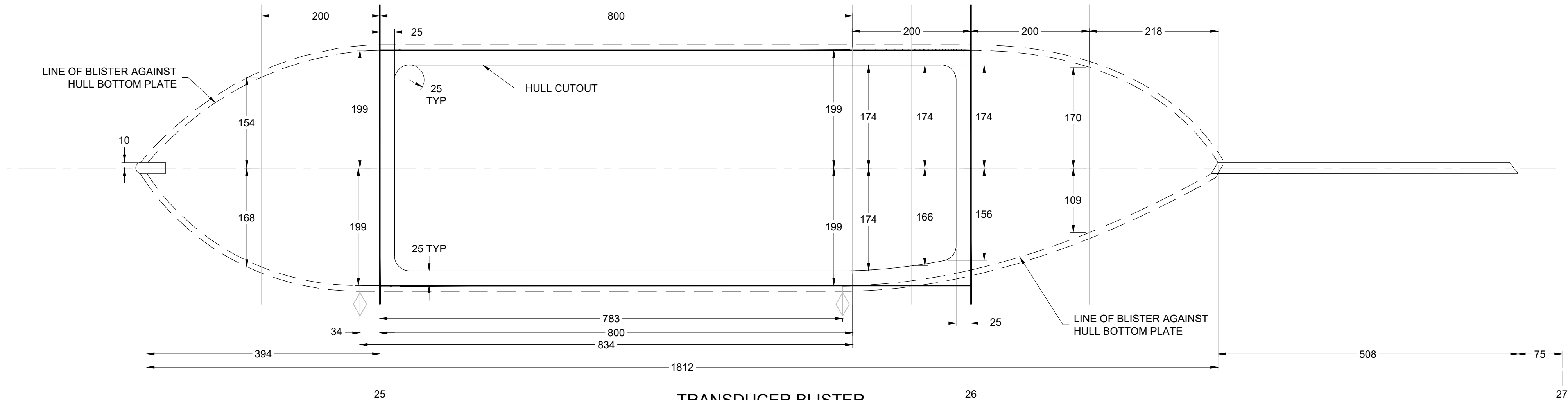
Garde côtière
Canadienne

Vendor Information / Sous-traitant

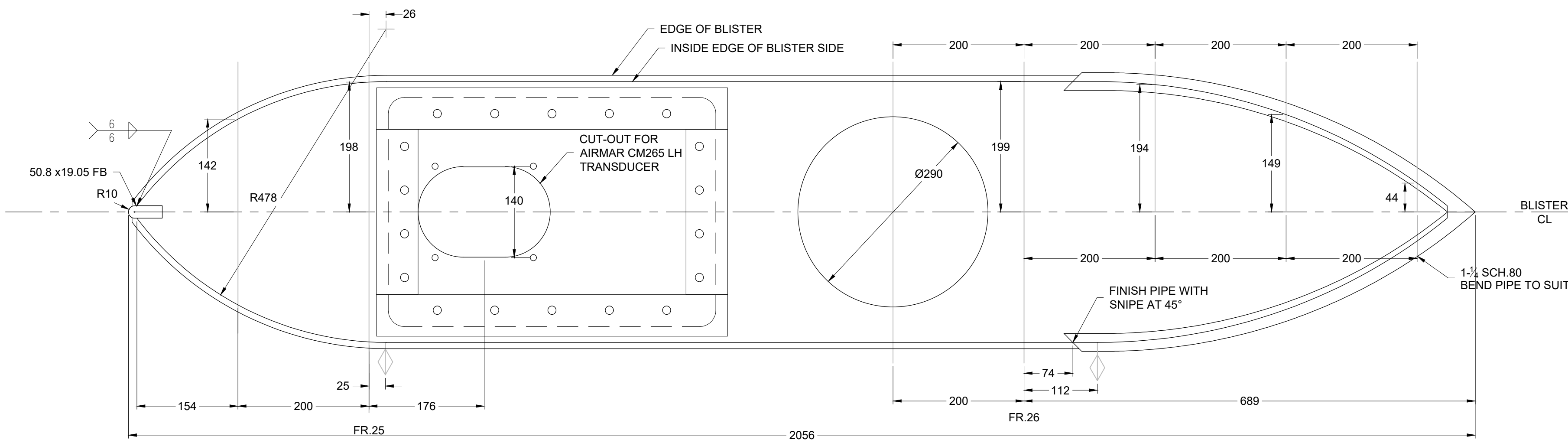
18-48-428-01

File / Fichier: AF6102-18-48-428-01 TRANSDUCER BLISTER REV0.DWG - Printed / Imprimé: 2018/06/2 9:9

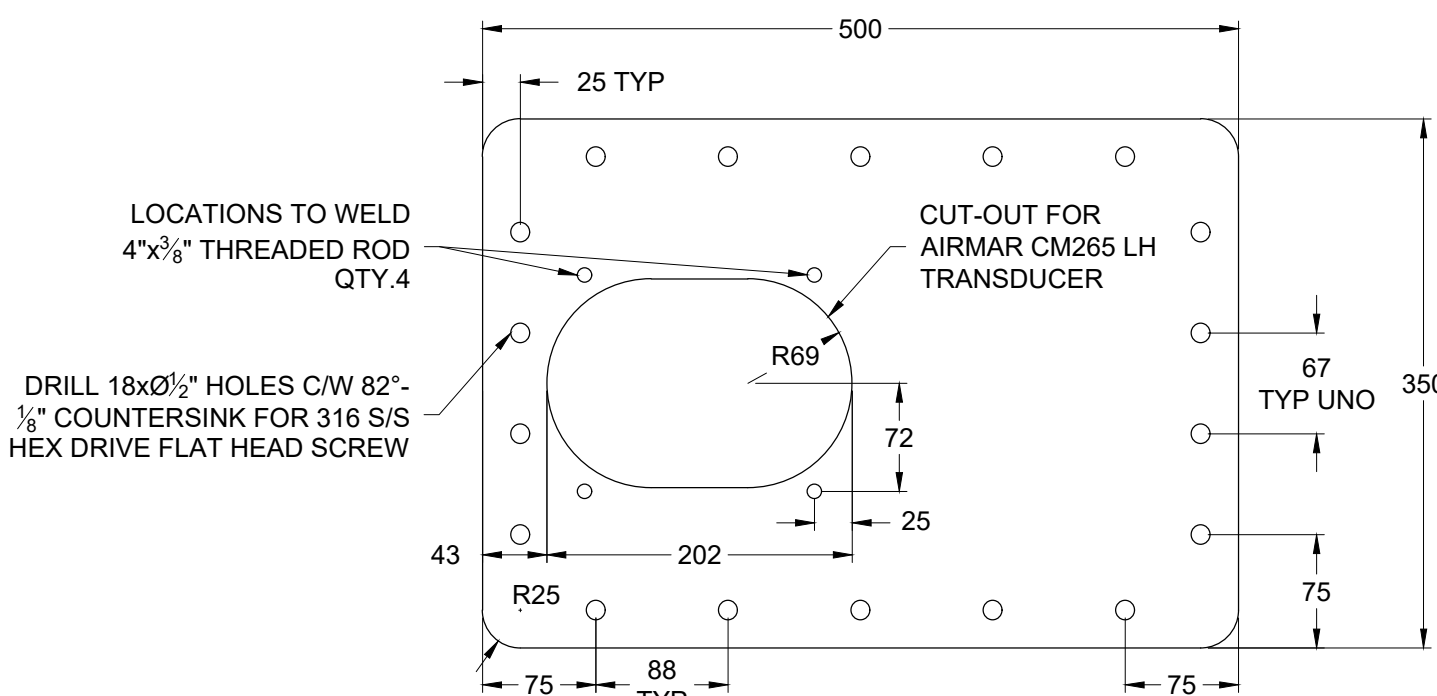
A1



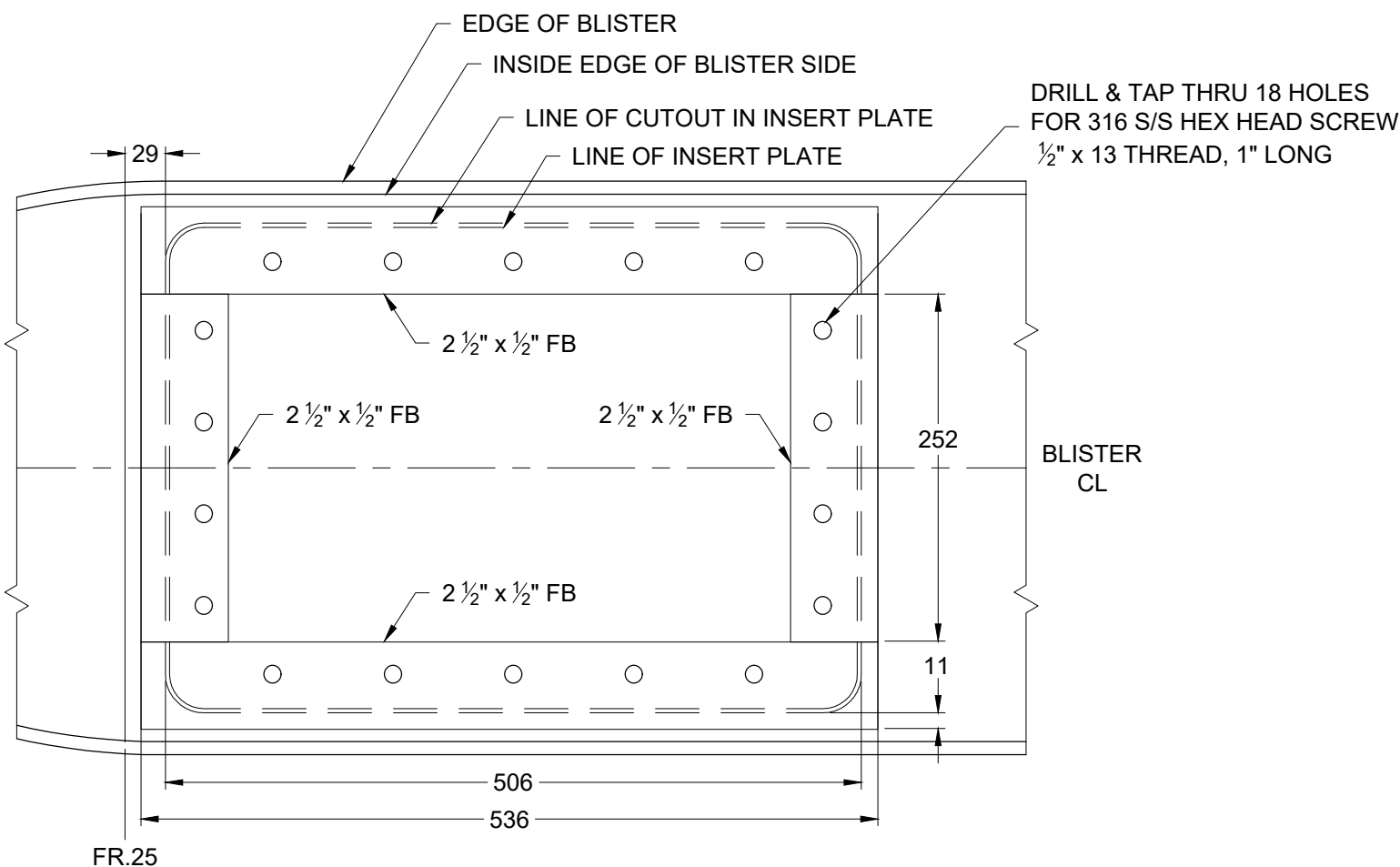
TRANSDUCER BLISTER
PLAN VIEW AT HULL BOTTOM PLATE
SCALE 1:5



ARRANGEMENT TRANSDUCER BLISTER
PLAN VIEW AT BOTTOM OF BLISTER
SCALE 1:5



BOTTOM COVER PLATE
3/4" PLATING
SCALE 1:5



TRANSDUCER BLISTER
PLAN VIEW AT BOTTOM OF BLISTER
SCALE 1:5

0	INITIAL ISSUE	AS	2018-12-18
---	---------------	----	------------

rev	description	by	date
-----	-------------	----	------

Asset - Actif

CCGS MSPV

TRANSDUCER BLISTER

Drawing - Dessin

TRANSDUCER BLISTER
ARRANGEMENT DETAILS

designed - conception date
3GA MARINE LTD 2018-12-18

drawn - dessiné date
AS 2018-12-18

checked - vérifié date
IGM 2018-12-18

approved - approuvé date
DM 2018-12-18

CCG ref. no. - no. réf. GCC scale - échelle
F1782-181444 AS NOTED

drawing no. - no. dessin sheet-feuille rev-rév
18-48-428-01 03/03 0

