



RETURN BIDS TO:
RETOURNER LES SOUMISSIONS À:
Bid Receiving Public Works and Government
Services Canada/Réception des soumissions Travaux
publics et Services gouvernementaux Canada
800 Burrard Street, Room 219
800, rue Burrard, pièce 219
Vancouver
British Columbia
V6Z 0B9
Bid Fax: (604) 775-9381

SOLICITATION AMENDMENT

MODIFICATION DE L'INVITATION

The referenced document is hereby revised; unless otherwise indicated, all other terms and conditions of the Solicitation remain the same.

Ce document est par la présente révisé; sauf indication contraire, les modalités de l'invitation demeurent les mêmes.

Comments - Commentaires

Vendor/Firm Name and Address
Raison sociale et adresse du
fournisseur/de l'entrepreneur

Issuing Office - Bureau de distribution
Public Works and Government Services Canada -
Pacific Region
800 Burrard Street, Room 219
800, rue Burrard, pièce 219
Vancouver
British C
V6Z 0B9

Title - Sujet Washroom Buildings	
Solicitation No. - N° de l'invitation EZ899-172848/A	Amendment No. - N° modif. 002
Client Reference No. - N° de référence du client	Date 2017-06-26
GETS Reference No. - N° de référence de SEAG PW-\$PWY-015-8080	
File No. - N° de dossier PWY-7-40015 (015)	CCC No./N° CCC - FMS No./N° VME
Solicitation Closes - L'invitation prend fin at - à 02:00 PM on - le 2017-07-06	Time Zone Fuseau horaire Pacific Daylight Saving Time PDT
F.O.B. - F.A.B. Plant-Usine: <input type="checkbox"/> Destination: <input checked="" type="checkbox"/> Other-Autre: <input type="checkbox"/>	
Address Enquiries to: - Adresser toutes questions à: Chan (PWY), Scarlett	Buyer Id - Id de l'acheteur pwy015
Telephone No. - N° de téléphone (604) 369-7853 ()	FAX No. - N° de FAX (604) 775-6633
Destination - of Goods, Services, and Construction: Destination - des biens, services et construction: Parks Canada (PCA) - Pacific Rim National Park - Tofino, BC	

Instructions: See Herein

Instructions: Voir aux présentes

Delivery Required - Livraison exigée	Delivery Offered - Livraison proposée
Vendor/Firm Name and Address Raison sociale et adresse du fournisseur/de l'entrepreneur	
Telephone No. - N° de téléphone Facsimile No. - N° de télécopieur	
Name and title of person authorized to sign on behalf of Vendor/Firm (type or print) Nom et titre de la personne autorisée à signer au nom du fournisseur/ de l'entrepreneur (taper ou écrire en caractères d'imprimerie)	
Signature	Date

Solicitation No. - N° de l'invitation
EZ899-172848/A

Amd. No. - N° de la modif.
002

Buyer ID - Id de l'acheteur
pwy015

Client Ref. No. - N° de réf. du client

File No. - N° du dossier
PWY-7-40015

CCC No./N° CCC - FMS No/ N° VME

Solicitation Amendment 002

This solicitation amendment is raised to include Addendum #1. All other terms and conditions remain unchanged.

ADDENDUM #1

Date: June 26, 2017

PACIFIC RIM NATIONAL PARK
WASHROOM BUILDINGS
TOFINO, B.C.
Project No: R.078666.001

The following revisions supersede the information contained in the original drawings and specification issued for the above named project, and shall become part thereof. No consideration will be allowed for extras due to the contractor or any subcontractor not being familiar with this Addendum.

1.0 ARCHITECTURAL SPECIFICATIONS

1.1 Refer to: Section 00 00 10, Table of Contents, Division 03, Concrete

Add:

03 35 00 Concrete Finishing

1.2 Refer to: Section 01 11 55 General Instructions

Add:

1.40 PARTIAL OCCUPANCY & WARRANTY PERIOD

1. Contractor will schedule progressive hand over of the completed work phase by phase to the Owner for occupancy based on the 2 phases of work as indicates in clause 1.4 of the General Instructions 01 11 55 warranty period.

1.41 SUBSTANTIAL COMPLETION

1. Substantial completion includes commissioning and functional use of the project in addition to the requirements under the terms and conditions of the Contract listed in the Standard Acquisition Conditions and Clauses.

1.3 Add:

Specification Section 03 35 00, Concrete Finishing

1.4 Refer to: Section 09 06 00, Room Finish Schedule

Delete:

Section 09 06 00, Room Finish Schedule dated March 2017

Add:

Section 09 06 00, Room Finish Schedule dated June 2017

1.5 Refer to: Section 09 30 13, Ceramic Tiling, 2.2 Floor Tile

Add:

.2 PRT-2

- .1 300mm x 300mm x 10mm exterior grade slip-resistant porcelain floor tile, framed finish. Colour: Dark Gray, Regal by Olympia or equal approved.

CHERNOFF THOMPSON ARCHITECTS

**26/06/2017
Addendum #1**

**PROJECT NO.: R 078666.001
CTA Project #35030**

ADDENDUM #1

Date: June 26, 2017

PACIFIC RIM NATIONAL PARK
WASHROOM BUILDINGS
TOFINO, B.C.
Project No: R.078666.001

The following revisions supersede the information contained in the original drawings and specification issued for the above named project, and shall become part thereof. No consideration will be allowed for extras due to the contractor or any subcontractor not being familiar with this Addendum.

1.6 Refer to: Section 09 30 13, Ceramic Tiling, 2.7.7 Accessories

Add:

- .3 For all wall tiles and polished concrete floor transitions, use anodized aluminum cove-shaped profile with trapezoid-perforated anchoring leg secured in mortar bond and a dovetailed channel bonded to floor-surfaces. Approved product Schluter - DILEX – AHKA or approved equal.

2.0 ARCHITECTURAL DRAWINGS

Add:

- AD-1 Wickaninnish Beach Floor Plan, Reflected Clg. Plan, Roof Plan & Floor Tile Pattern Plan
- AD-2 Wickaninnish Beach Floor Plan, Reflected Clg. Plan, Roof Plan & Floor Tile Pattern Plan
- AD-3 Long Beach North & South Floor Plan, Reflected Clg. Plan, Roof Plan & Floor Tile Pattern Plan
- AD-4 Long Beach North & South Floor Plan, Reflected Clg. Plan, Roof Plan & Floor Tile Pattern Plan
- AD-5 Incinerator Rock, Roof Plan & Floor Tile Pattern Plan
- AD-6 Incinerator Rock, Roof Plan & Floor Tile Pattern Plan
- AD-7 Green Point #1 & #4 Typ. Floor Plan, Reflected Clg. Plan, Roof Plan & Floor Tile Pattern Plan.
- AD-8 Key Abbreviations
- AD-9 Typical Building Section Details
- AD-10 Typical Building Section Details
- AD-11 Typical Building Section Details
- AD-12 Typical Building Section Details
- AD-13 Typical Building Section Details
- AD-14 Interior Elevation

3.0 MECHANICAL

3.1. Add:

Mechanical Addendum #1 dated June 26, 2017 (3 pages).

4.0 ELECTRICAL

4.1. Add:

For Greenpoint Washroom #1 and #4 only - to protect underground conduits from damage due to building settlement, all floor slab conduit penetrations shall be installed as shown on the attached sketch ESK-1.

END OF ADDENDUM #1

CHERNOFF THOMPSON ARCHITECTS

**26/06/2017
Addendum #1**

**PROJECT NO.: R.078666.001
CTA Project #35030**

Pacific Rim National Park Washroom Building Replacement

Tofino, BC

Project No. R.078666.001

03 35 00

CONCRETE FINISHING

March 2017

1.0 GENERAL

1.1 RELATED WORK

- | | | |
|----|---------------------------------|------------------|
| .1 | Cast-In-Place Concrete | Section 03 30 00 |
| .2 | Room Finish Schedule | Section 09 06 00 |
| .3 | Concrete Walks, Curbs & Gutters | Section 32 16 15 |

1.2 REFERENCES

- .1 Canada Green Building Council (CaGBC)
 - .1 LEED Canada-NC 2009, LEED (Leadership in Energy and Environmental Design): LEED Canada Reference Guide for Green Building Design and Construction 2009.
- .2 Canadian General Standards Board (CGSB)
 - .1 CAN/CGSB-1.40-97, Anti-corrosive Structural Steel Alkyd Primer.
 - .2 CAN/CGSB-1.181-99, Ready-Mixed Organic Zinc-Rich Coating.
- .3 CSA International
 - .1 CSA A23.1/A23.2-09, Concrete Materials and Methods of Concrete Construction/Test Methods and Standard Practices for Concrete.
- .4 South Coast Air Quality Management District (SCAQMD), California State, Regulation XI. Source Specific Standards
 - .1 SCAQMD Rule 1168-A2005, Adhesive & Sealants Applications.

1.3 QUALITY ASSURANCE

- .1 Standards: Conform to CAN/CSA-A23.1, for concrete finishes.
- .2 Sandblasting installer operations shall conform to applicable codes and Regulations.
- .3 Installer Qualifications:
 - .1 Work shall be carried out by personnel who are thoroughly trained and experienced in the floor treatment. The installer to provide a list of a minimum of 3 projects performed within 3 years of equivalent complexity and scope as this contract.
- .4 Mock-ups:
 - .1 Sandblasting
 - .1 Prior to beginning full scale sandblasting operations, prepare a minimum 4' x4' 1200 x 1200 mm test area as selected by Departmental Representative to review sandblasting techniques and desired results for light, medium, and coarse sandblast finishes.
 - .2 Maintain Mock-up during construction in an undisturbed condition as a standard for judging the work. Accepted Mock-up may remain as part of the work.
- .5 Pre-installation Meeting:
 - .1 Prior to commencement of Work on site, convene a pre-installation conference to be attended by the Contractor, Coating Subcontractor, Manufacturer's Technical Representative, Consultant and Owner to review:
 - .1 Convey proper installation and placement of concrete slabs to ensure proper concrete finishing requirements in order to achieve adequate floor polishing application.

- .2 Convey to Contractor Requirements for protection of concrete slabs to receive concrete floor polishing and to coordinate sequence of work and application during construction.

1.4 SUBMITTALS

- .1 Submittals to be in accordance with 01 33 00 Submittal Procedures.
- .2 Product Data:
 - .1 Provide manufacturer's printed product literature and data sheets for concrete finishes and include product characteristics, performance criteria, physical size, finish and limitations.
 - .1 Provide two copies of WHMIS MSDS in accordance with Section 01 35 33-Health & Safety Requirements. WHMIS MSDS acceptable to Labour Canada and Health and Welfare Canada for concrete floor treatment materials. Indicate VOC content in g/L.
 - .2 Include application instructions for concrete floor treatments.
 - .3 Submit maintenance instructions for insertion in operations and maintenance manuals. Instructions shall give specific warning of maintenance or cleaning practices or materials, which may damage installed work.

1.5 DELIVERY, STORAGE AND HANDLING

- .1 Deliver, store and handle materials in accordance with Section 01 61 00 - Common Product Requirements and with manufacturer's written instructions.
- .2 Delivery and acceptance and storage requirements:
 - .1 Deliver materials to site in manufacturer's original factory packaging, labelled with manufacturer's name and address.
 - .2 Store materials in a clean dry area in accordance with manufacturer's instructions.
 - .3 Keep product from freezing.
 - .4 Avoid direct contact with this product as it may cause mild to moderate irritation of the eyes and/or skin.
 - .5 Protect materials during handling and application to prevent damage or contamination.
- .3 Dispense special concrete finish material from sealed containers.
- .4 Packaging Waste Management: Comply with requirements of Section 01 74 19 Waste Management and Disposal.
- .5 Comply with requirements of Workplace Hazardous Materials Information System (WHMIS) regarding use, handling, storage, and disposal of hazardous materials, and regarding labelling and provision of Material Safety Data Sheets (MSDS) acceptable to Labour Canada.

1.6 ENVIRONMENTAL REQUIREMENTS / PROJECT CONDITIONS

- 1. Do not apply product when air, surface, or material temperature is below 35°F (2°C) or above 135°F (57°C).
- 2. Do not apply to frozen concrete.
- 3. Do not use on highly dense or non-porous surfaces.
- 4. Allow concrete to cure a minimum of 45 days, or as otherwise acceptable by product manufacturer before commencement of work.
- 5. Do not commence with polishing until Work has been sufficiently advanced, whereby Work yet to be performed will not adversely affect polished concrete floors. Application of products shall take place a minimum of 21 days prior to fixture and trim installation and Substantial Performance of Work.

6. Limit and control dust generated by grinding and polishing procedures in order to prevent potential damage to adjacent surfaces and equipment.
7. Control the use of water. Remove standing water from completed floor surfaces.
8. Ensure that penetrating sealers are not applied to concrete floors that are to be polished.

1.7 EXTENDED WARRANTY

1. Provide two (2) year manufacturer's warranty on products and installation against fading and delamination of finished surfaces.

2.0 PRODUCTS

2.1 MATERIALS

- .1 Concrete materials shall conform to requirements of Section 03 30 00-Cast-In-Place Concrete Short Form and CAN/CSA-A23.1.
- .2 Slip-Resistant Additive:
 - .1 Finely ground polymer material for addition to concrete sealers.
 - .2 Compatible with the applied acrylic sealer.
 - .3 Polymer suspended in a sealer material.
 - .4 Sure-Step by WR Meadows or approved equal.
- .3 Bonding Agent: Formulated for bonding new concrete to cured concrete. Acceptable Products:
 - .1 "Polymer Bonding Agent" by Target Products Ltd.
 - .2 "710 Flex-Con" by Else Construction Products.
 - .3 "K-710 Krystobond" by Kryton International Inc.
 - .4 "Fabribond-A" by Fabrikem Manufacturing Ltd.
 - .5 Or approved alternative.
- .4 Curing and Sealing Compound:
 - .1 Conforms to ASTM C309-11, Type 1, Class B.
 - .2 ASTM C1315, Type 1, Class A.
 - .3 30% solid concrete curing and sealing compound formulated of acrylic polymers in true water base carrier.
 - .4 Compound dries clear to provide a transparent sheer finish.
 - .5 Provide impermeable seal for maximum moisture protection.
 - .6 VOC Content < 50g/L
 - .7 VOCOMP-30 water-based, acrylic concrete curing and sealing compound or approved equal.
- .5 Natural Hardener: Premixed, abrasion resistant non-metallic hardener (Type 1). Acceptable Products:
 - .1 "Mastercron" by Master Builders Company Limited.
 - .2 "Diamag 7" by Sternson Limited.
 - .3 "Non-Metallic Floor Hardener" by Target Products Ltd.
 - .4 "785 Genflor Non-Metallic Floor Hardener" by Elstro Construction Products.
 - .5 Or approved alternative.
- .6 Non-Shrink Grout (for patching): Acceptable Products:
 - .1 "Embeco Mortar" by Master Builders Company Limited.
 - .2 Pre-mixed "Fast-Set Patching Concrete" by Target Products Ltd
 - .3 "810 Gengrout" by Elstro Construction Products.
 - .4 "K-510 Krystol Patch/Grout" by Kryton International Inc.
 - .5 Or approved alternative.
- .7 Densifier: Non-flammable non-toxic, water-based formulation used on Portland Cement materials utilizing Quartz-Litium based products. Acceptable Products:
 - .1 "Crenz Protect" by Crenz Concrete.

- .2 "Pentra Sil" by Convergent Concrete.
- .3 "Euco Diamond Hard" by The Euclid Chemical Company.
- .4 "Liquihard Ultra" Surface Hardener
- .5 Or approved alternative.

.8 Seeding Aggregates: Aggregate shall be small round, brown pebbles size around 10 mm and be hard, sand, durable and free of all deleterious materials and staining quality.

.9 Aggregate for Polished Concrete: 10 mm pea gravel in salt and pepper color.

2.2 FINISHES

- .1 Sandblasting: Light to medium sandblasting for exposed exterior concrete wall.
- .2 Trowelled finish for all concrete floor with surface hardener.
- .3 Exposed aggregate finish for tactile warning strip at stop of stair landing.
- .4 Polished Concrete Finish: Provide satin finish that will reflect images from side lighting only.

3.0 EXECUTION

3.1 FINISHING-GENERAL

- .1 Do concrete finishing work in accordance with CAN/CSA-A23.1-M01, unless otherwise indicated.
- .2 Tops of Walls and Columns to be level and true. Allowable tolerance 6 mm in 3,000 mm.

3.2 FORMED SURFACES

- .1 Inspect concrete surfaces for defects immediately after removal of formwork.
- .2 Remove or cut back to a depth of 3/4" (19 mm) from the surface of the concrete all bolts, ties, nails, or other metal that is not required and repair immediately. Patch all cone and sleeve holes flush with concrete surface in strict accordance with manufacture's printed instructions. Grout all steel inserts in strict conformance with grout manufacturer's printed instructions.
- .3 Remove imperfections such as bulges, fins, lips, and stains to permanently exposed surfaces as directed by Departmental Representative by chipping or grinding and patch to match adjacent surfaces. Do not proceed with grinding until the concrete has sufficiently hardened to prevent dislodgment of coarse aggregate particles. Allowable limits of grinding to be 1/16" so as to not expose aggregate.
- .4 Repair to exposed surfaces or surfaces to receive paint type finishes: Repairs to be carried out under the direction of the Departmental Representative. Blend cement and aggregate so that, when dry, patching mortar will match colour of surrounding. Provide test areas at inconspicuous location to verify mixture and colour match before proceeding with patching. Compact mortar in place and strike-off slightly higher than surrounding surface. Patch and fill all concrete imperfections such as "blow holes", "honeycomb" and voids as directed.
- .5 Strike off smooth and finish tops of walls, horizontal offsets, and similar unformed surfaces occurring adjacent to formed surfaces with a texture matching the adjacent formed surfaces. Continue final surface treatment of formed surfaces uniformly across adjacent unformed surfaces, unless otherwise shown.

3.3 HORIZONTAL SURFACES

- .1 Where floor drains occur, floors to be level around walls and have a minimum 1:50 uniform pitch to drains, unless indicated otherwise. Stairs and landings shall have positive slopes to provide complete water drainage with no ponding.

- .2 Finish horizontal concrete surfaces as follows:
 - .1 Exposed horizontal surfaces not intended to receive additional concrete: Smooth steel trowel finish or as indicated on the drawings.
 - .2 Horizontal concrete surfaces intended to receive waterproofing membrane or applied floor finishes: Smooth, steel trowel finish. Floors to be finished flat, free from defects which would telegraph through finish material.
 - .3 Horizontal concrete surfaces intended to receive additional concrete toppings, quarry tile or ceramic tile: Screeded off to true lines and levels shown, roughened to an amplitude of 3/16" (5 mm), cleaned of laitance and loose concrete and left ready to receive finish. Depress slabs to accommodate finish where indicated.
 - .4 Broom Finish: After completion of floating and when excess moisture of surface sheen has disappeared, complete surface finishing by drawing a fine-hair broom across concrete surface, perpendicular to line of traffic. Repeat operation if required to provide a fine line texture acceptable to Consultant.

3.4 PLAIN FLOOR FINISH (TROWELED)

- .1 Roll or tamp concrete to force coarse aggregate into concrete mix and then screed.
- .2 Float surface with wood or metal floats or with power finishing machine and bring surface to true grade.
- .3 Steel trowel to smooth and even surface.
- .4 Follow with second steel trowelling to produce smooth burnished surface to within tolerance described in CAN/CSA-A23.1-M90, Clause 22.1.2-Straight-Edge Method for Very Flat Classification Finish 1/8" (3 mm) in 10'-0" (3000 mm) to all floors receiving carpet, resilient flooring, liquid applied flooring, thin-set ceramic tile. All other floors shall be finished to Flat Classification Finish 3/16" (5 mm) in 10'-0" (3000 mm). Floors shall be true to plane as determined by a 10'-0" (3.0 meter) straight-edge placed anywhere on the surfaces in any direction. Check conformance to tolerance limits at any time after the curing period. Where this Section conflicts with other Sections in Division 3, this Section shall govern.
- .5 Sprinkling of dry cement or dry cement and sand mixture over concrete surfaces is not acceptable.
- .6 Apply curing compound in accordance with manufacturer's instructions to all areas not scheduled to receive further floor finish.
- .7 Protect surfaces which will be exposed to direct sunlight during the curing period in accordance with manufacturer's instructions.

3.5 HARDENED FLOOR FINISH

- .1 Roll or tamp concrete to force coarse aggregate into concrete mix and then screed and apply non-metallic hardener to manufacturer's instructions.
- .2 Apply first shake of aggregate (one half of amount) after floating.
- .3 Float first shake and apply second shake.
- .4 Float second shake.
- .5 Flat steel trowel to produce fine texture non-slip finish.
- .6 Apply two coats of curing and sealing compound in accordance with manufacturer's directions.

3.6 BONDING AGENT

- .1 Apply bonding agent to all concrete when new concrete will be applied against it under the following conditions:
 - .1 Patching.

- .2 Feathering.
- .3 Construction joints.
- .4 Bonding of topping slabs.

3.7 DEFECTIVE WORK

- .1 Repair honeycombing, rock packets, chips, spalls and other voids in exposed concrete surfaces, using patching materials as specified to provide a smooth surface. Remove fins and other protrusions in concrete surfaces. Maximum allowable depth of grinding to be 1/16".
- .2 Consult with Departmental Representative on the repair of defective concrete surfaces prior to execution of the work.
- .3 Patch form tie holes in all exposed concrete surfaces and surfaces designated to receive waterproofing unless otherwise directed.
- .4 Where in the opinion of Departmental Representative, material or workmanship fails to meet the requirements of the specification, such work may be rejected. Work rejected shall be replaced or repaired to the approval of the consultant at no additional cost to the owner.

3.8 POLISHED CONCRETE FLOOR FINISH

- .1 Use a troweling machine (diameter of blades max. 915mm) with plastic blades to finish the concrete.
- .2 Use a water-based acrylic curing & sealing compound formulated using special polymers in a true-water based carrier; sealer to provide an impermeable seal for superior moisture protection. Apply the sealer to manufacturer's guidelines.
- .3 Proceed with construction/work, finish everything except installation of fixtures & washroom partitions.
- .4 Doing a final sweep cleaning followed by a light sanding of the floor surface with 180 & 200 grit sand paper to remove foreign materials, etc. that may have penetrated the sealed concrete surface. Vacuum & wash clean, let dry.
- .5 Add Sip-Resistant Additive with final application of sealer.

3.9 PROTECTION

- .1 Take every precaution to protect finished surfaces from stains and abrasions. Surfaces and edges likely to be damaged during the construction period shall be especially protected.
- .2 Protect work of other sections from damage resulting from work of this Section.
- .3 Provide suitable enclosures for collecting grit and dust from sandblasting operation.
- .4 Erect barricades to prevent traffic on newly finished surfaces.
- .5 Suggested protection in high traffic areas after the sealer has been applied is as follows:
 - .1 Place cheap colourfast carpet that is breathable (not rubber backed), fuzzy side down or Protect CP board.
 - .2 Masonite or plywood may then be applied over the carpet/cardboard for further protection.

3.10 ADJUSTING & CLEANING

- .1 Progress Cleaning: Clean during progress of the Work in accordance with Section 01 74 11-Cleaning.
- .2 Final Cleaning: Upon completion remove surplus materials, rubbish, tools and equipment in accordance with Section 01 74 11- Cleaning.

Pacific Rim National Park Washroom Building Replacement

Tofino, BC

Project No. R.078666.001

03 35 00

CONCRETE FINISHING

March 2017

-
- .3 Repair, remove and clean all drips or smears resulting from the work of this section on exposed, finished surfaces or surfaces to be subsequently finished.
 - .4 Engage a concrete finish manufacturer's authorized representative to train Owner's maintenance personnel on proper maintenance procedures

END OF SECTION 03 35 00

NO.		ROOM NAME	FLOORS	BASE	WALLS				CEILING	REMARKS
LONG BEACH NORTH & SOUTH, WICKANINNISH BEACH										
RS1	MALE VANITY		PCONC.	CT	CT	CT	CT	CT	GWB	
RS2	MALE TOILET STALLS		PCONC.	CT	CT	CT	CT	CT	GWB	
RS3	SERVICE ROOM		CONC.	-	PTD	PTD	PTD	PTD	EXP.	
RS4	FEMALE VANITY		PCONC.	CT	CT	CT	CT	CT	GWB	
RS5	FEMALE TOILET STALLS		PCONC.	CT	CT	CT	CT	CT	GWB	
RS6	CHANGE CUBICLE #1		SSG	-	FCB	FCB	FCB	FCB	FCB	#1
RS7	CHANGE CUBICLE #2		SSG	-	FCB	FCB	FCB	FCB	FCB	#1
RS8	FAMILY CHANGE CUBICLE #1		SSG	-	FCB	FCB	FCB	FCB	FCB	#1
RS9	FAMILY CHANGE CUBICLE #2		SSG	-	FCB	FCB	FCB	FCB	FCB	#1
INCINERATOR ROCK										
RS1	MALE VANITY		PCONC.	CT	CT	CT	CT	CT	GWB	
RS2	MALE TOILET STALLS		PCONC.	CT	CT	CT	CT	CT	GWB	
RS3	SERVICE ROOM		CONC.	-	PTD	PTD	PTD	PTD	EXP.	
RS4	FEMALE VANITY		PCONC.	CT	CT	CT	CT	CT	GWB	
RS5	FEMALE TOILET STALLS		PCONC.	CT	CT	CT	CT	CT	GWB	
RS6	CHANGE CUBICLE #1		SSG	-	FCB	FCB	FCB	FCB	MTL	#1
RS7	CHANGE CUBICLE #2		SSG	-	FCB	FCB	FCB	FCB	MTL	#1
RS8	FAMILY CHANGE CUBICLE #1		SSG	-	FCB	FCB	FCB	FCB	MTL	#1
RS9	FAMILY CHANGE CUBICLE #2		SSG	-	FCB	FCB	FCB	FCB	MTL	#1
GREENPOINT #1 AND 4										
RS1	MALE VANITY		PCONC.	CT	CT	CT	CT	CT	GWB	
RS2	MALE TOILET STALLS		PCONC.	CT	CT	CT	CT	CT	GWB	
RS3	MALE SHOWER		PRT-1	CT	CT	CT	CT	CT	GWB	
RS4	SERVICE ROOM		CONC.	-	PTD	PTD	PTD	PTD	EXP.	
RS5	SERVICE CORRIDOR		CONC.	-	PTD	PTD	PTD	PTD	EXP.	
RS6	FEMALE VANITY		PCONC.	CT	CT	CT	CT	CT	GWB	
RS7	FEMALE TOILET STALLS		PCONC.	CT	CT	CT	CT	CT	GWB	
RS8	FEMALE SHOWER		PRT-1	CT	CT	CT	CT	CT	GWB	
RS9	DISH WASH AREA		PRT-2	-	FCB	FCB	FCB	FCB	FCB	#1

Pacific Rim National Park Washroom Building

Tofino, BC

Project No. R.078666.001

09 06 00

ROOM FINISH SCHEDULE

June 2017

LEGENDS

<u>FLOOR</u>		<u>BASE</u>		<u>WALLS</u>		<u>CEILINGS</u>	
CONC	Sealed Concrete	CT	Ceramic Tile	CT	Ceramic Tile	EXP	Exposed Ceiling
PCONC	Polished Concrete						
PRT	Porcelain Tile			FCB	Fibre Cement Board	FCB	Fibre Cement Board
SSG	Stainless Steel Grating			PT	Painted	GWB	GWB Ceiling Paint Finish
						MTL	Metal Soffit Panel

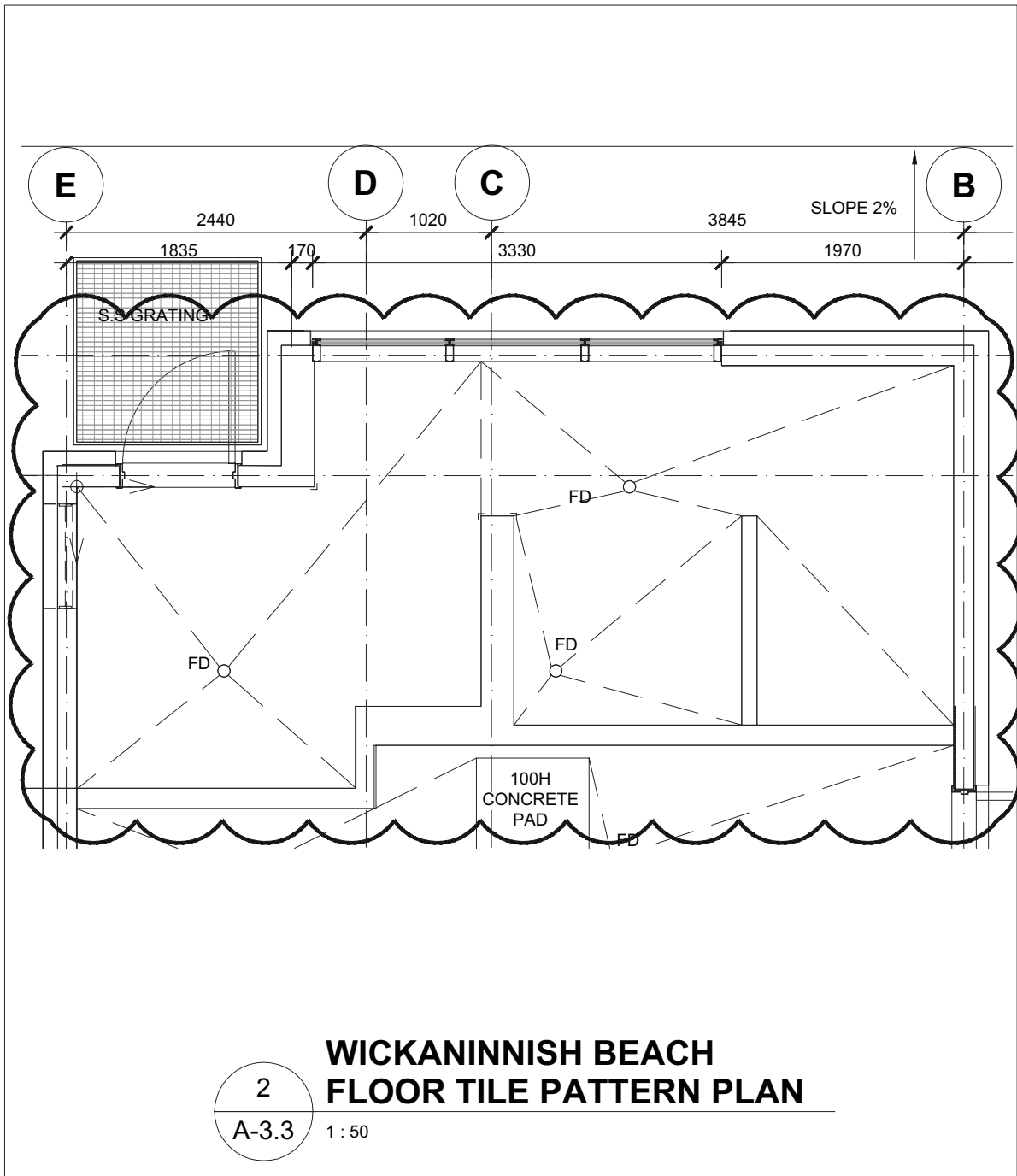
GENERAL NOTES

- .1 All wall finishes and wall base to be continuous behind all wall fixtures.
- .2 Vertical bulkheads/down drops to be finished same as horizontal U.O.N.
- .3 Return wall finishes into window frames at jambs and head U.O.N.
- .4 Wall finishes to extend down to floor with applied base over.
- .5 All backer board for ceramic tiles wall to be fiber cement board.
- .6 All ceiling GWB to be water resistant GWB.

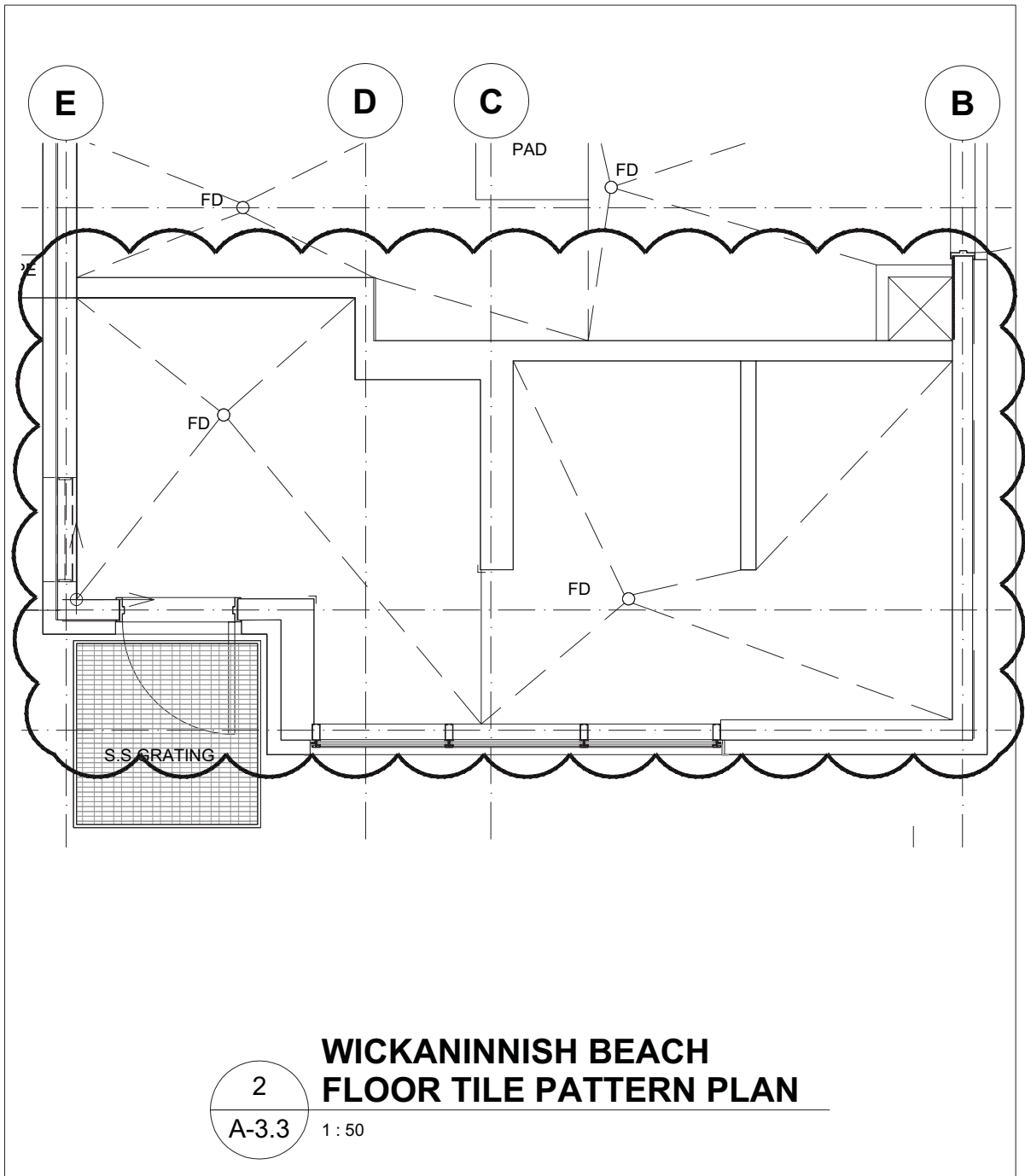
REMARKS

- .1 Refer Exterior Elevation and Ceiling Plan

END OF SECTION 09 06 00



Project title/Titre du projet PACIFIC RIM NATIONAL PARK WASHROOM BUILDINGS REPLACEMENT PACIFIC RIM HIGHWAY		Drawing title/Titre du dessin WICKANINNISH BEACH FLOOR PLAN, REFLECTED CEILING PLAN, ROOF PLAN & FLOOR TILE PATTERN PLAN	
Consultant Signature Only	PWGSC Project Manager/Administrateur de Projets TPSGC TOM DUNPHY	Scale/Echelle 1 : 50	
Designed by/Concept par TY	PWGSC, Regional Manager, Architectural and Engineering Services/ Gestionnaire régionale, Services d'architectural et de génie, TPSGC PREETIPAL PAUL	Date/Date 2017/06/26	
Drawn by/Dessine par EK	Project No./No. du projet R.078666.001	Sheet/Feuille AD-1	Revision/ Revision



WICKANINNISH BEACH FLOOR TILE PATTERN PLAN

Project title/Titre du projet

**PACIFIC RIM NATIONAL PARK
WASHROOM BUILDINGS REPLACEMENT
PACIFIC RIM HIGHWAY**

Drawing title/Titre du dessin

**WICKANINNISH BEACH FLOOR PLAN,
REFLECTED CEILING PLAN, ROOF PLAN
& FLOOR TILE PATTERN PLAN**

Consultant Signature Only

PWGSC Project Manager/Administrateur
de Projets TPSGC **TOM DUNPHY**

Scale/Echelle

1 : 50

Designed by/Concept par

TY

PWGSC, Regional Manager, Architectural and Engineering Services/
Gestionnaire régionale, Services d'architectural et de génie, TPSGC
PREETIPAL PAUL

Date/Date

2017/06/26

Drawn by/Dessine par

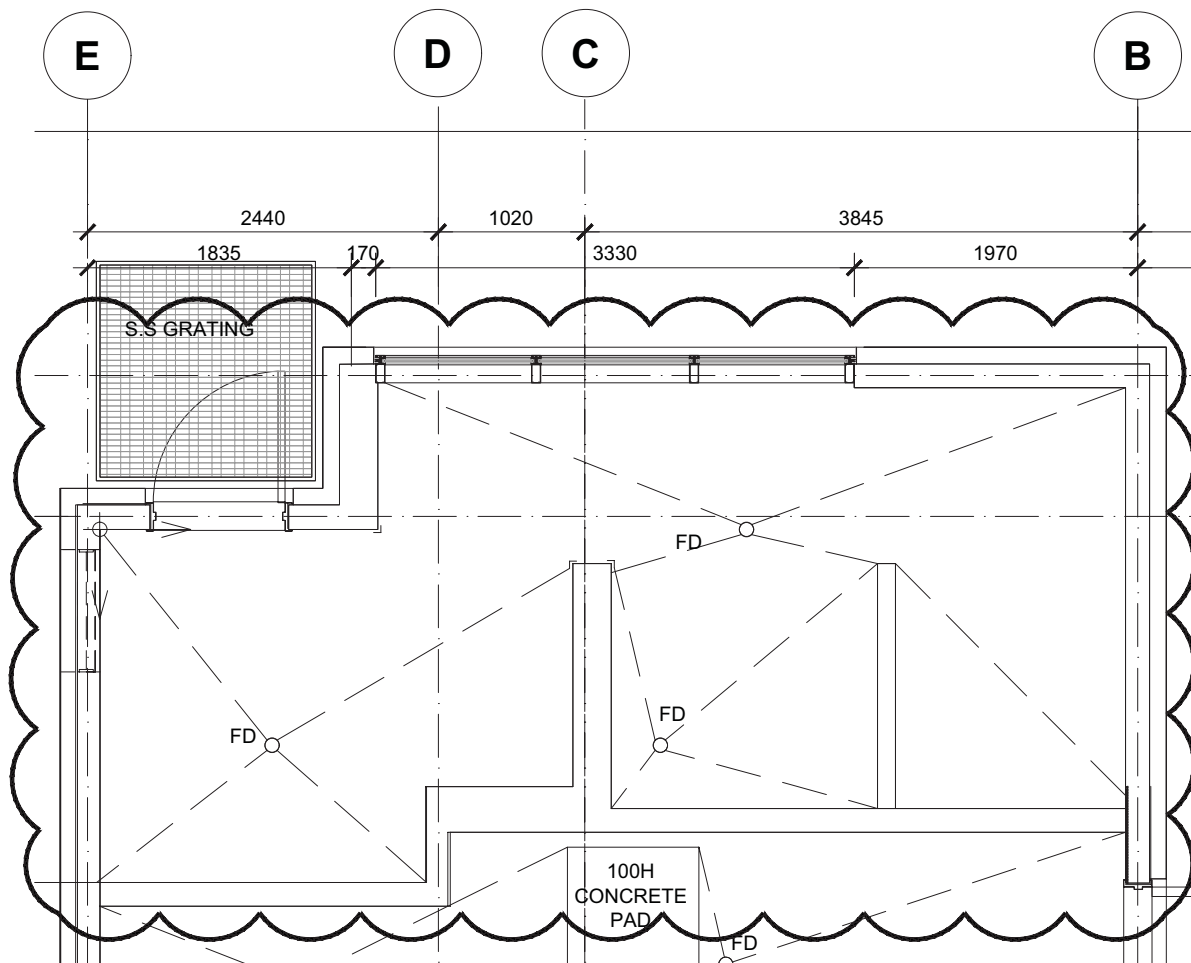
EK

Project No./No. du
projet **R.078666.001**

Sheet/Feuille

AD-2

Revision/
Revision

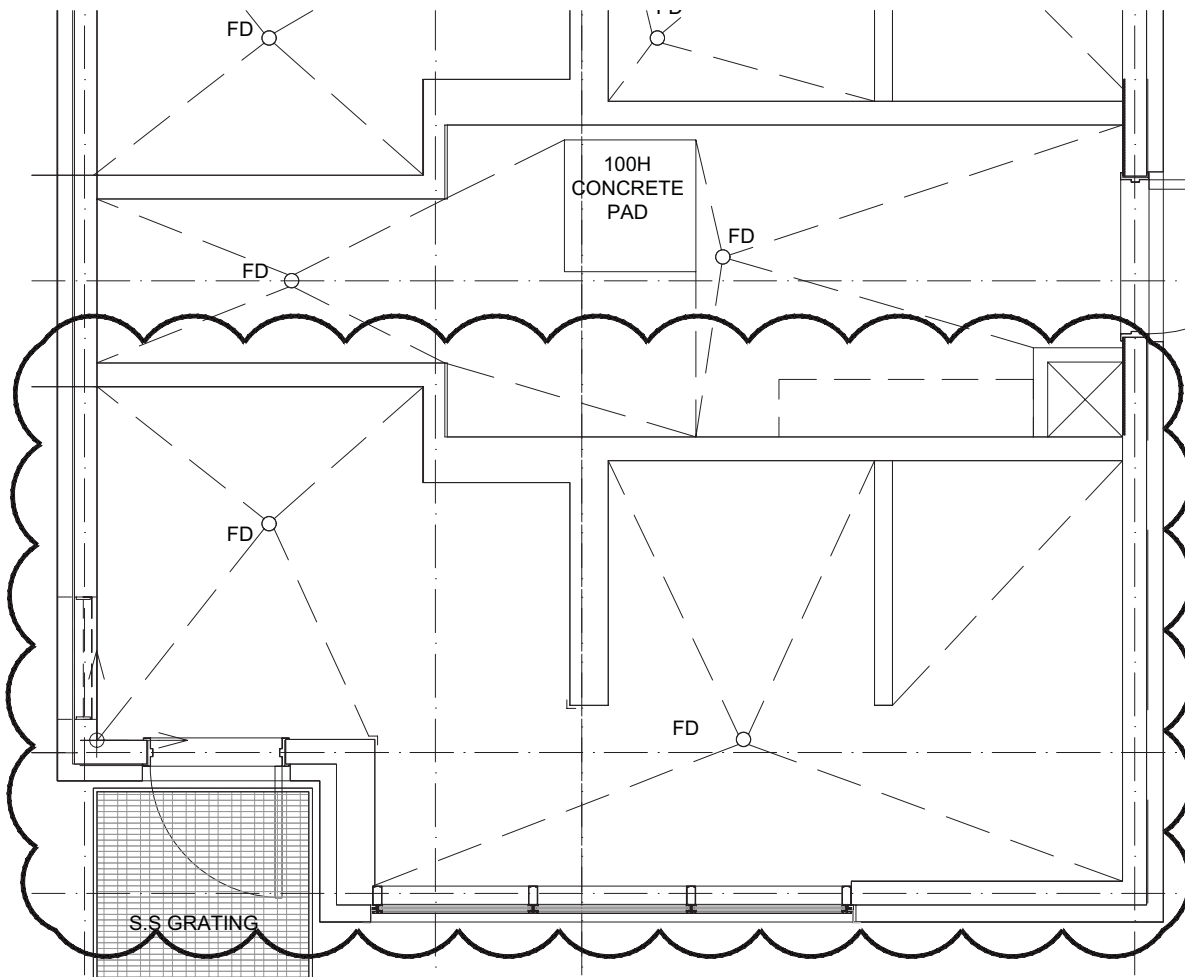


2
A-4.4

LONG BEACH NORTH & SOUTH SEALED CONCRETE FLOOR PLAN

1 : 50

Project title/Titre du projet PACIFIC RIM NATIONAL PARK WASHROOM BUILDINGS REPLACEMENT PACIFIC RIM HIGHWAY		Drawing title/Titre du dessin LONG BEACH NORTH & SOUTH FLOOR PLAN, REFLECTED CEILING PLAN, ROOF PLAN & FLOOR TILE PATTERN PLAN	
Consultant Signature Only	PWGSC Project Manager/Administrateur de Projets TPSGC TOM DUNPHY	Scale/Echelle 1 : 50	
Designed by/Concept par TY	PWGSC, Regional Manager, Architectural and Engineering Services/ Gestionnaire régionale, Services d'architectural et de génie, TPSGC PREETIPAL PAUL	Date/Date 2017/06/26	
Drawn by/Dessine par EK	Project No./No. du projet R.078666.001	Sheet/Feuille AD-3	Revision/ Revision

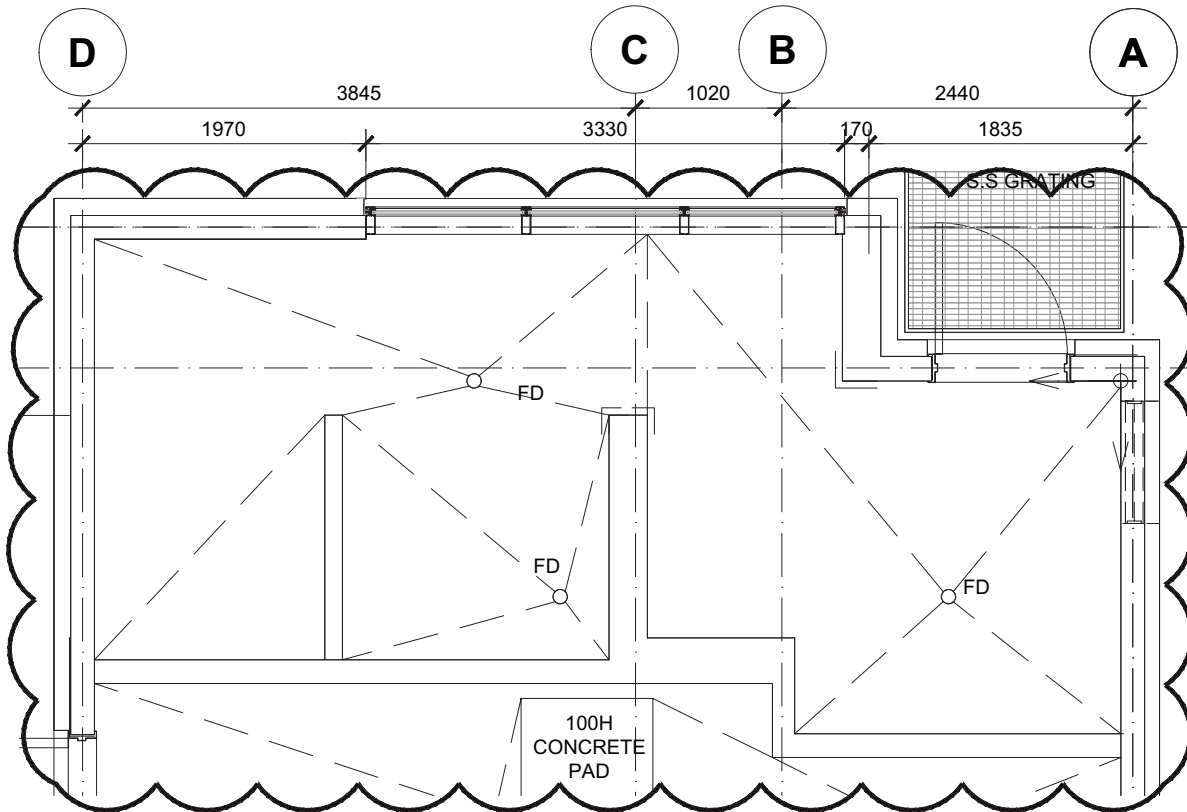


2
A-4.4

LONG BEACH NORTH & SOUTH SEALED CONCRETE FLOOR PLAN

1 : 50

Project title/Titre du projet PACIFIC RIM NATIONAL PARK WASHROOM BUILDINGS REPLACEMENT PACIFIC RIM HIGHWAY		Drawing title/Titre du dessin LONG BEACH NORTH & SOUTH FLOOR PLAN, REFLECTED CEILING PLAN, ROOF PLAN & FLOOR TILE PATTERN PLAN	
Consultant Signature Only	PWGSC Project Manager/Administrateur de Projets TPSGC TOM DUNPHY	Scale/Echelle 1 : 50	
Designed by/Concept par TY	PWGSC, Regional Manager, Architectural and Engineering Services/ Gestionnaire régionale, Services d'architectural et de génie, TPSGC PREETIPAL PAUL	Date/Date 2017/06/26	
Drawn by/Dessine par EK	Project No./No. du projet R.078666.001	Sheet/Feuille AD-4	Revision/ Revision



2
A-2.4

INCINERATOR ROCK FLOOR TILE PATTERN

1 : 50

Project title/Titre du projet

**PACIFIC RIM NATIONAL PARK
WASHROOM BUILDINGS REPLACEMENT
PACIFIC RIM HIGHWAY**

Drawing title/Titre du dessin

**INCINERATOR ROCK
ROOF PLAN & FLOOR TILE PATTERN PLAN**

Consultant Signature Only

PWGSC Project Manager/Administrateur
de Projets TPSGC **TOM DUNPHY**

Scale/Echelle

1 : 50

Designed by/Concept par

TY

PWGSC, Regional Manager, Architectural and Engineering Services/
Gestionnaire régionale, Services d'architectural et de génie, TPSGC
PREETIPAL PAUL

Date/Date

2017/06/26

Drawn by/Dessine par

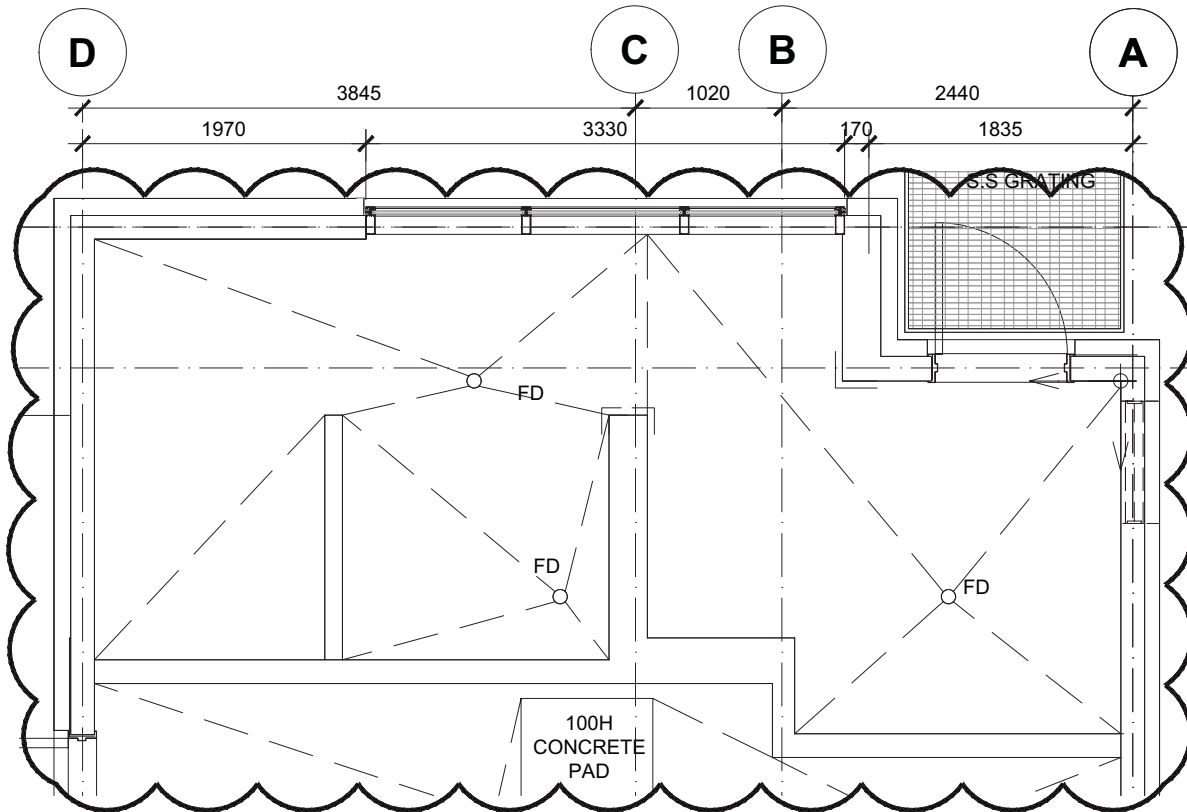
EK

Project No./No. du
projet **R.078666.001**

Sheet/Feuille

AD-5

Revision/
Revision



2
A-2.4

INCINERATOR ROCK FLOOR TILE PATTERN

1 : 50

Project title/Titre du projet

**PACIFIC RIM NATIONAL PARK
WASHROOM BUILDINGS REPLACEMENT
PACIFIC RIM HIGHWAY**

Drawing title/Titre du dessin

**INCINERATOR ROCK
ROOF PLAN & FLOOR TILE PATTERN PLAN**

Consultant Signature Only

PWGSC Project Manager/Administrateur
de Projets TPSGC **TOM DUNPHY**

Scale/Echelle

1 : 50

Designed by/Concept par

TY

PWGSC, Regional Manager, Architectural and Engineering Services/
Gestionnaire régionale, Services d'architectural et de génie, TPSGC
PREETIPAL PAUL

Date/Date

2017/06/26

Drawn by/Dessine par

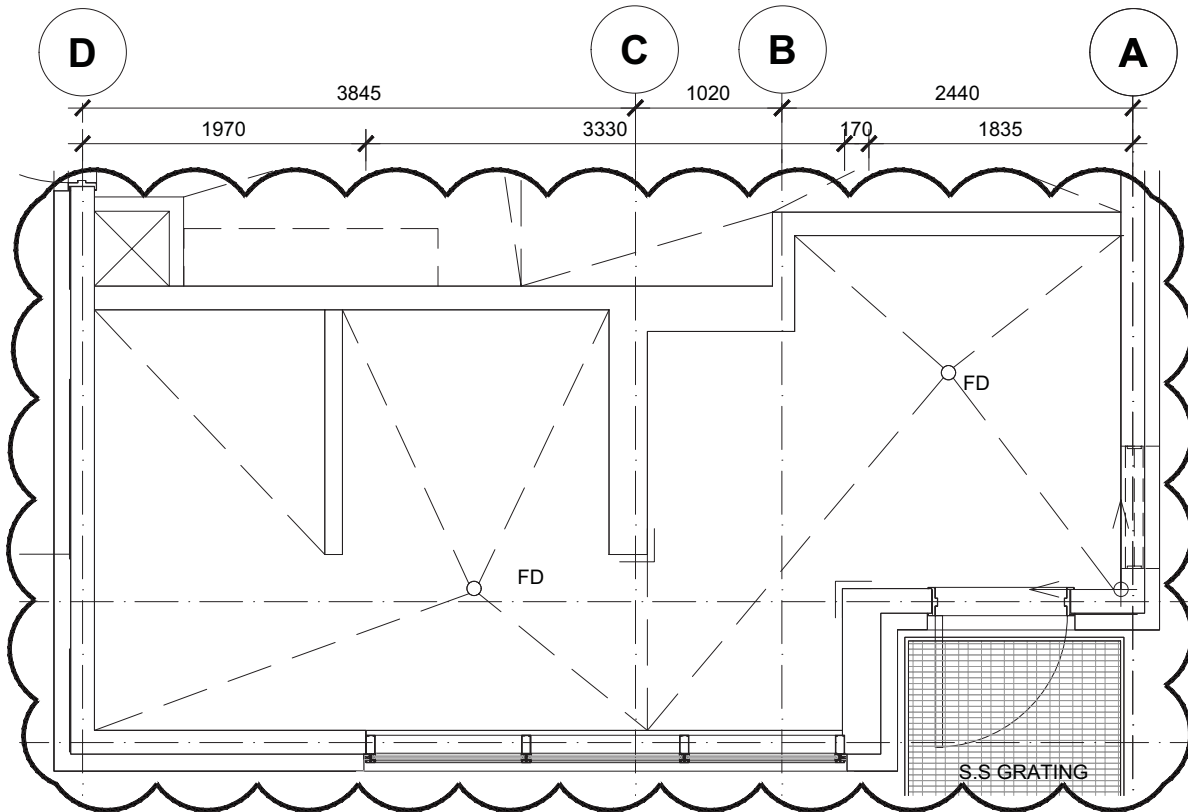
EK

Project No./No. du
projet **R.078666.001**

Sheet/Feuille

AD-5

Revision/
Revision



2
A-2.4

INCINERATOR ROCK FLOOR TILE PATTERN

1 : 50

Project title/Titre du projet

**PACIFIC RIM NATIONAL PARK
WASHROOM BUILDINGS REPLACEMENT
PACIFIC RIM HIGHWAY**

Drawing title/Titre du dessin

**INCINERATOR ROCK
ROOF PLAN & FLOOR TILE PATTERN PLAN**

Consultant Signature Only

PWGSC Project Manager/Administrateur
de Projets TPSGC **TOM DUNPHY**

Scale/Echelle

1 : 50

Designed by/Concept par

TY

PWGSC, Regional Manager, Architectural and Engineering Services/
Gestionnaire régionale, Services d'architectural et de génie, TPSGC
PREETIPAL PAUL

Date/Date

2017/06/26

Drawn by/Dessine par

EK

Project No./No. du
projet **R.078666.001**

Sheet/Feuille

AD-6

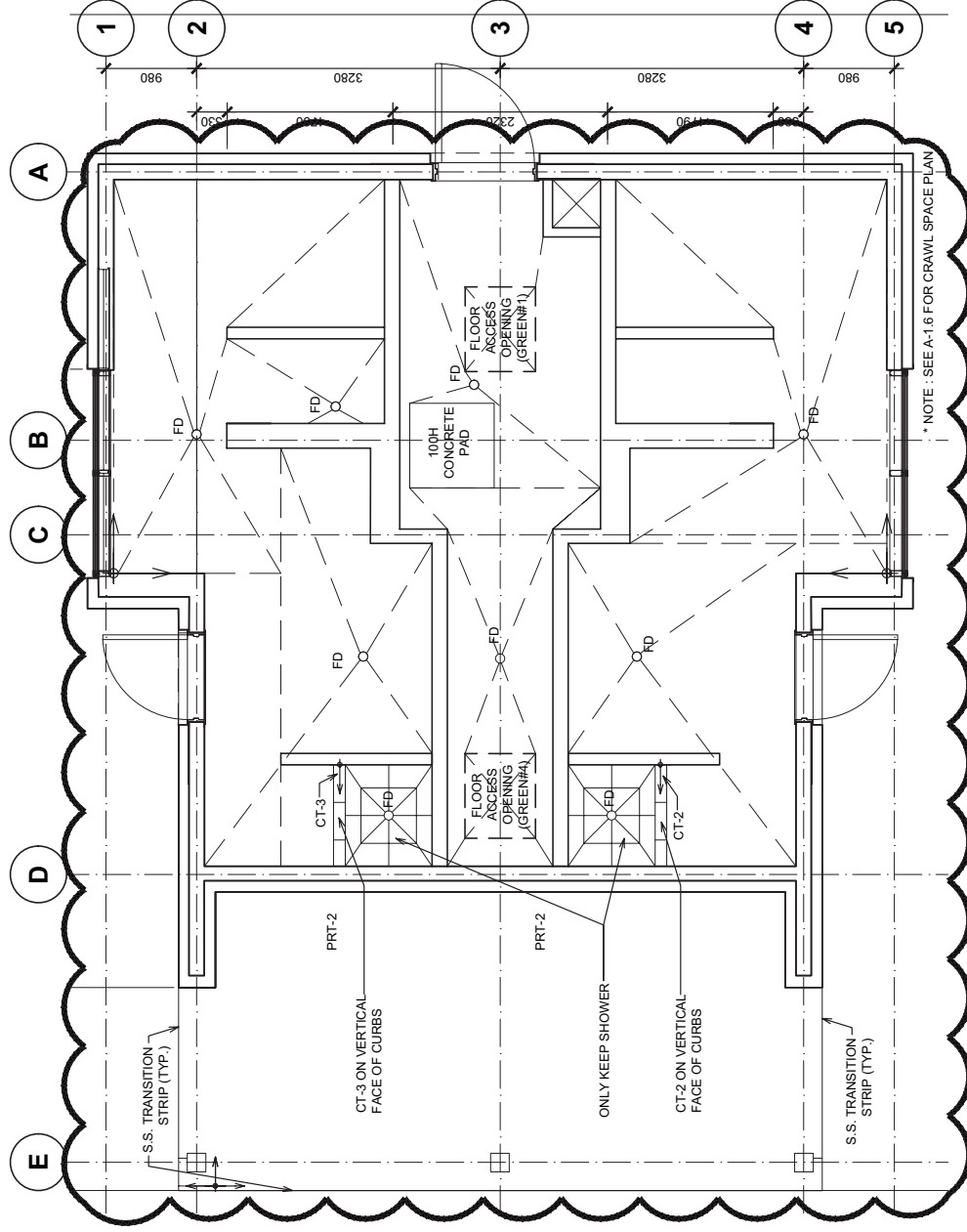
Revision/
Revision



Public Works and
Government Services
Canada

Travaux publics et
Services gouvernementaux
Canada

REAL PROPERTY SERVICES / SERVICES IMMOBILIERS
Pacific Region / Région de Pacifique



GREEN POINT #1 & #4 FLOOR TILE PATTERN PLAN

4
A-1.4 1:50

Client/client	Project title/Titre du projet PARKS CANADA	Drawing title/Titre du dessin GREEN POINT #1 & #4 TYPICAL FLOOR PLAN, REFLECTED CEILING PLAN, ROOF PLAN & FLOOR TILE PATTERN PLAN	Consultant Signature & Date Only		Project No./No. du projet R.078666.001
			Designed by/Concept par TY	Drawn by/Dessiné par EK	
Project title/Titre du projet PACIFIC RIM HIGHWAY PACIFIC RIM NATIONAL PARK WASHROOM BUILDINGS REPLACEMENT		PWS3C Project Manager/Administrateur de Projets TP33C TON DUNPHY PWS3C Regional Manager and Engineering Services Manager régional et des services, TP33C PREETIPAL PAUL		AD-7 OF	
Date/Date 2017/06/26					
		Sheet/Feuille		0	

AO - PWSC - AND B-4.5 - 1137

DN5XXXXXX



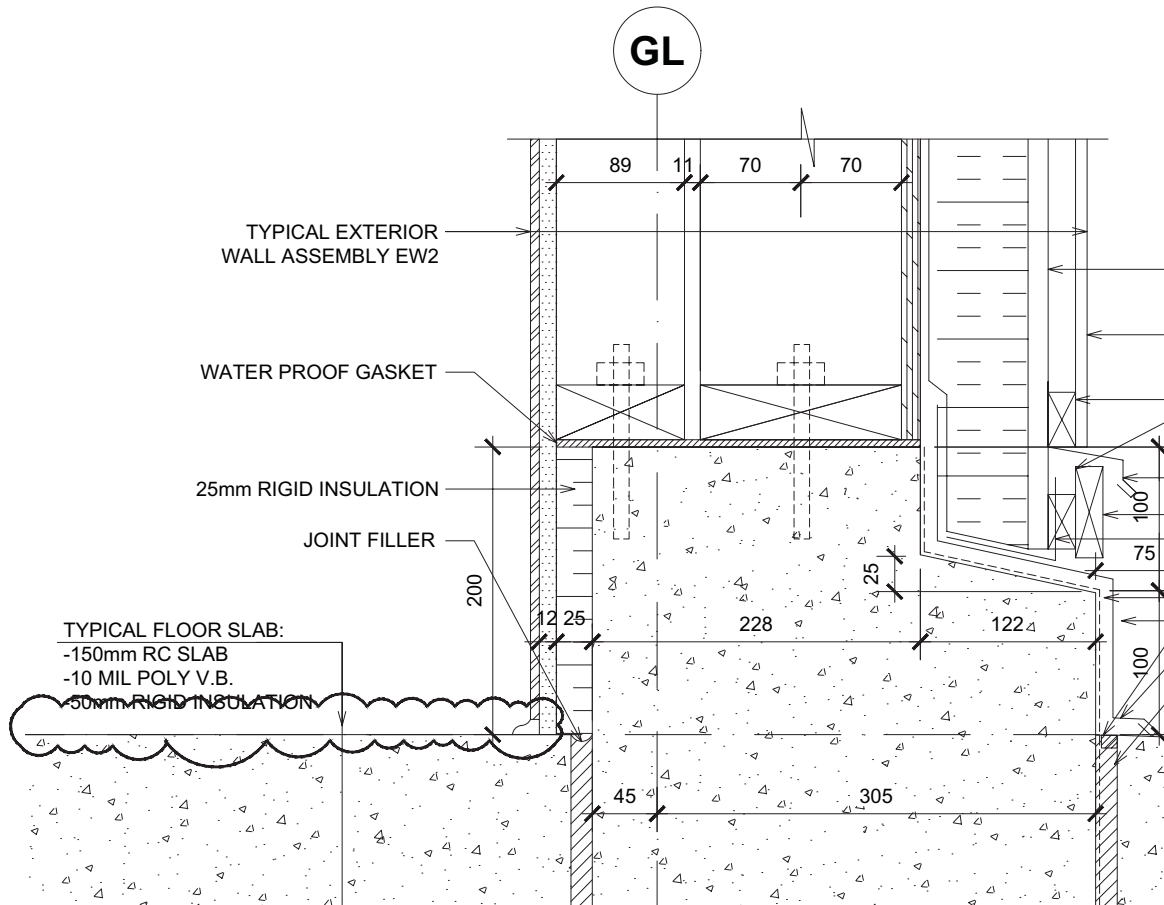


KEY ABBREVIATIONS

BCS	- BABY CHANGING STATION
BH	- BENCH
DB	- DOOR OPERATOR PUSH BUTTON
DO	- DOOR OPERATOR
DR	- DUPLEX RECEPTACLE (REFER ELEC.)
DPP	- DRAIN SUMP PUMP STATION CONTROL PANEL
EWH	- ELECTRIC WALL HEATER
FD	- FLOOR DRAIN
HD	- HAND DRYER
HC-1	- SINGLE COAT HOOK
HK-3	- HOOK STRIP (# OF HOOKS)
HK-6	- HOOK STRIP (# OF HOOKS)
HT	-HEATER
MR	- MIRROR
ND	- SANITARY NAPKIN DISPOSAL
PRT-1	- PORCELAIN TILE 1
PRT-2	- PORCELAIN TILE 2
PRT-3	- PORCELAIN TILE 3
SC	- SHOWER CURTAIN 2150mm (MOUNTED 4850mm AFFL, U.O.N.)
SD	- SOAP DISPENSER
SH-DS	- SHELF-DISABLED STALLS
SSH	- SHOWER SHELF
TCP	- TEMPERATURE CONTROL PANEL
TMV	- TEMPERATURE MIXING VALVES
TP	- TOILET PARTITION (MANUFACTURER TO CUSTOMIZE TOP HUNG TOILET PARTITION TO SUIT SLOPED CEILING)
TS	- THERMOSTAT
TTD-DS	- TOILET TISSUE DISPENSER (DISABLED STALLS)

Project title/Titre du projet PACIFIC RIM NATIONAL PARK WASHROOM BUILDINGS REPLACEMENT PACIFIC RIM HIGHWAY		Drawing title/Titre du dessin KEY ABBREVIATIONS	
Consultant Signature Only	PWGSC Project Manager/Administrateur de Projets TPSGC TOM DUNPHY	Scale/Echelle 1 : 50	
Designed by/Concept par TY	PWGSC, Regional Manager, Architectural and Engineering Services/ Gestionnaire régionale, Services d'architectural et de génie, TPSGC PREETIPAL PAUL	Date/Date 2017/06/26	
Drawn by/Dessine par EK	Project No./No. du projet R.078666.001	Sheet/Feuille AD-8	Revision/ Revision

PWGSC = ANSI A-P= 8.5 X 11



TYPICAL FOUNDATION DETAIL FOR EXT. WALL EW2

2

A-5.3

1 : 5

Project title/Titre du projet

**PACIFIC RIM NATIONAL PARK
WASHROOM BUILDINGS REPLACEMENT
PACIFIC RIM HIGHWAY**

Drawing title/Titre du dessin

TYPICAL BUILDING SECTION DETAILS

Consultant Signature Only

PWGSC Project Manager/Administrateur
de Projets TPSGC **TOM DUNPHY**

Scale/Echelle

1 : 5

Designed by/Concept par

TY

PWGSC, Regional Manager, Architectural and Engineering Services/
Gestionnaire régionale, Services d'architectural et de génie, TPSGC
PREETIPAL PAUL

Date/Date

2017/06/26

Drawn by/Dessine par

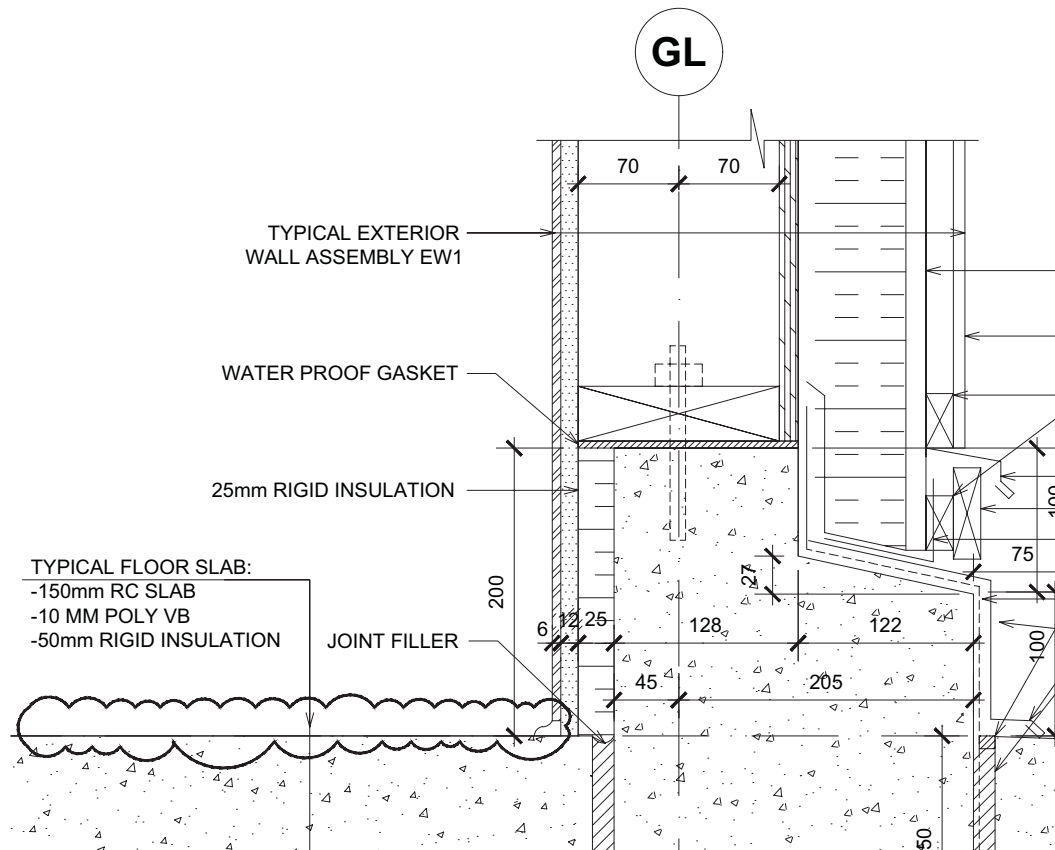
EK

Project No./No. du
projet **R.078666.001**

Sheet/Feuille

AD-10

Revision/
Revision



TYPICAL FOUNDATION DETAIL FOR EXT. WALL EW1

1
A-5.3

1 : 5

Project title/Titre du projet

**PACIFIC RIM NATIONAL PARK
WASHROOM BUILDINGS REPLACEMENT
PACIFIC RIM HIGHWAY**

Drawing title/Titre du dessin

TYPICAL BUILDING SECTION DETAILS

Consultant Signature Only

PWGSC Project Manager/Administrateur
de Projets TPSGC **TOM DUNPHY**

Scale/Echelle

1 : 5

Designed by/Concept par

TY

PWGSC, Regional Manager, Architectural and Engineering Services/
Gestionnaire régionale, Services d'architectural et de génie, TPSGC
PREETIPAL PAUL

Date/Date

2017/06/26

Drawn by/Dessine par

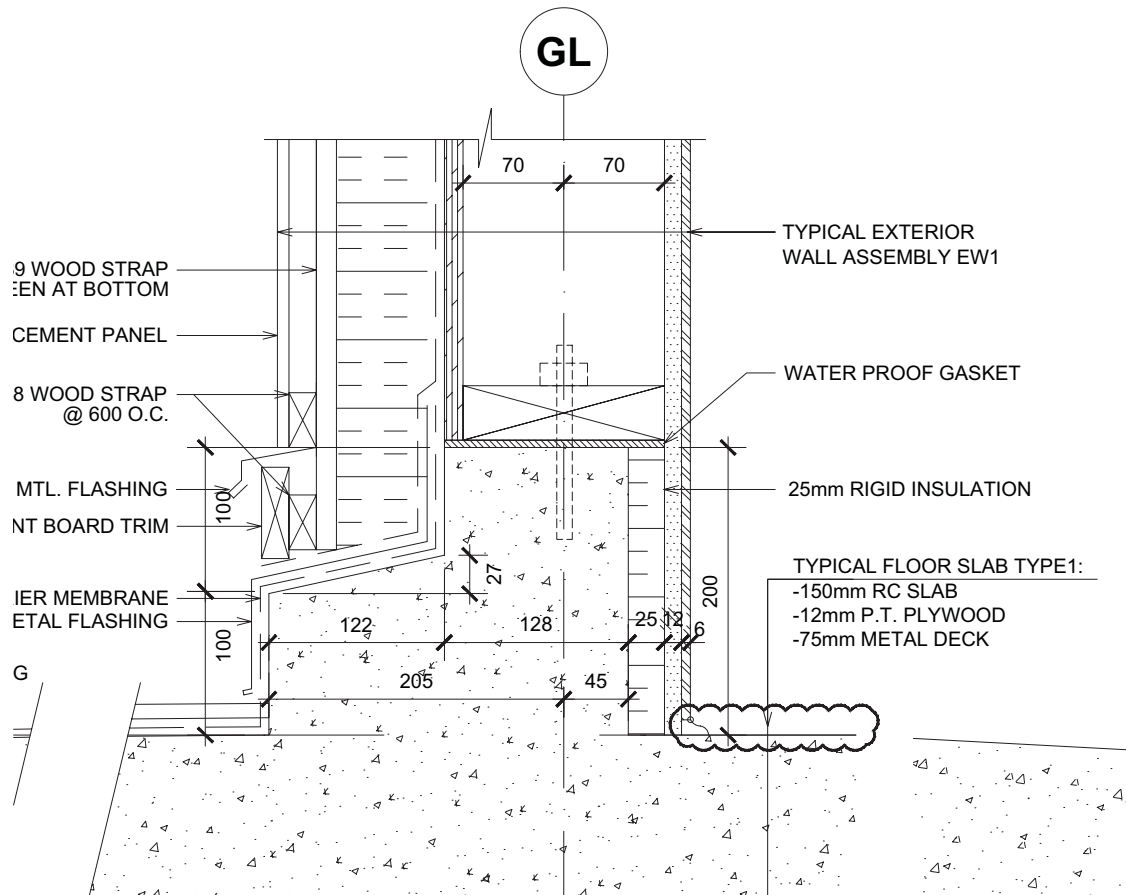
EK

Project No./No. du
projet **R.078666.001**

Sheet/Feuille

AD-11

Revision/
Revision

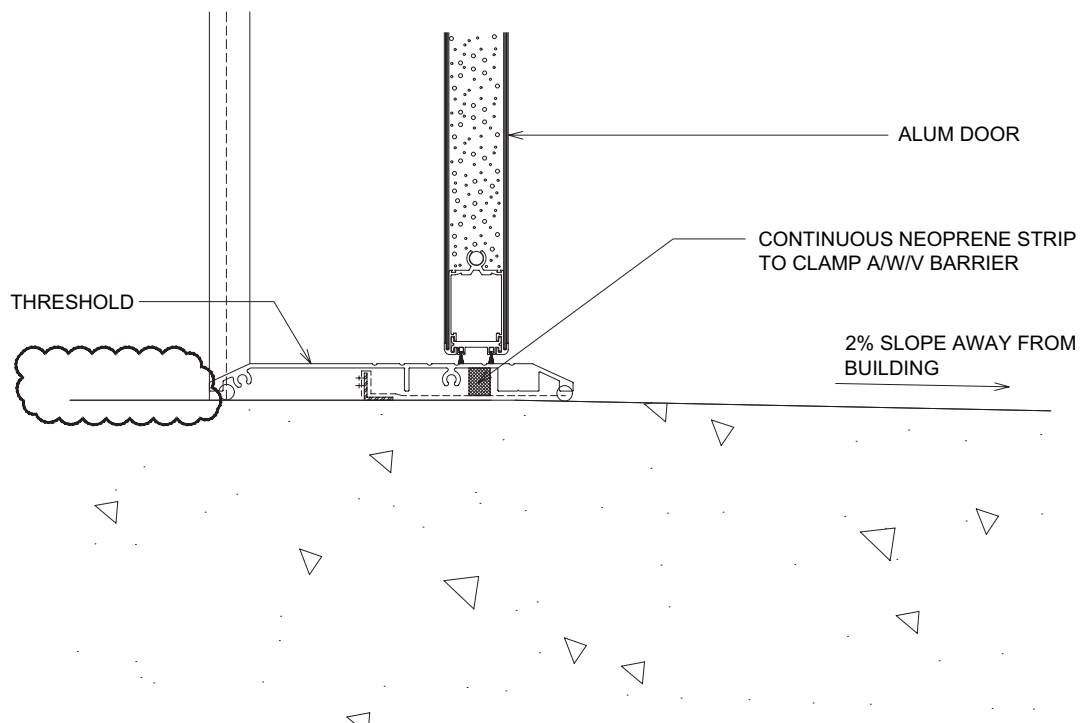


3
A-5.4

TYPICAL EXTERIOR SLAB DETAIL

1 : 5

Project title/Titre du projet PACIFIC RIM NATIONAL PARK WASHROOM BUILDINGS REPLACEMENT PACIFIC RIM HIGHWAY		Drawing title/Titre du dessin TYPICAL BUILDING SECTION DETAILS	
Consultant Signature Only	PWGSC Project Manager/Administrateur de Projets TPSGC TOM DUNPHY	Scale/Echelle 1 : 5	
Designed by/Concept par TY	PWGSC, Regional Manager, Architectural and Engineering Services/ Gestionnaire régionale, Services d'architectural et de génie, TPSGC PREETIPAL PAUL	Date/Date 2017/06/26	
Drawn by/Dessine par EK	Project No./No. du projet R.078666.001	Sheet/Feuille AD-12	Revision/ Revision

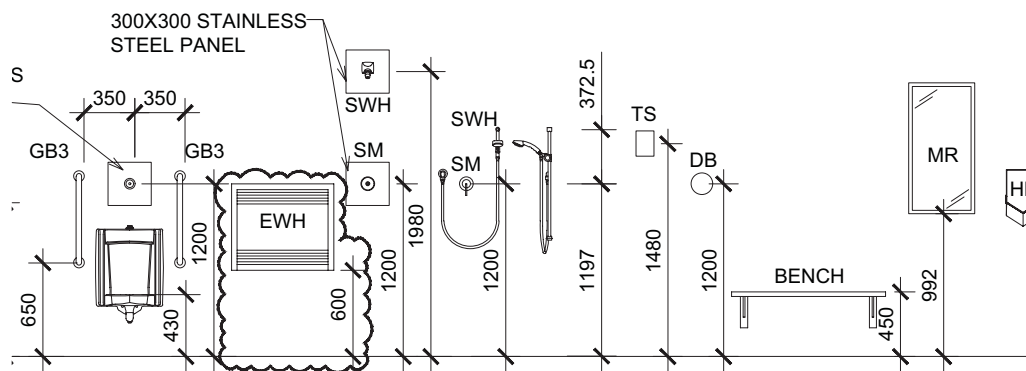


4
A-5.3

TYPICAL ALUMINUM DOOR THRESHOLD

1 : 5

Project title/Titre du projet PACIFIC RIM NATIONAL PARK WASHROOM BUILDINGS REPLACEMENT PACIFIC RIM HIGHWAY		Drawing title/Titre du dessin TYPICAL BUILDING SECTION DETAILS	
Consultant Signature Only	PWGSC Project Manager/Administrateur de Projets TPSGC TOM DUNPHY	Scale/Echelle 1 : 5	
Designed by/Concept par TY	PWGSC, Regional Manager, Architectural and Engineering Services/ Gestionnaire régionale, Services d'architectural et de génie, TPSGC PREETIPAL PAUL	Date/Date 2017/06/26	
Drawn by/Dessine par EK	Project No./No. du projet R.078666.001	Sheet/Feuille AD-13	Revision/ Revision



13
A-6.0

TYPICAL FIXTURES MOUNTING HEIGHT

SCALE 1:50

Project title/Titre du projet

**PACIFIC RIM NATIONAL PARK
WASHROOM BUILDINGS REPLACEMENT
PACIFIC RIM HIGHWAY**

Drawing title/Titre du dessin

INTERIOR ELEVATIONS

Consultant Signature Only

PWGSC Project Manager/Administrateur
de Projets TPSGC **TOM DUNPHY**

Scale/Echelle

1 : 50

Designed by/Concept par

TY

PWGSC, Regional Manager, Architectural and Engineering Services/
Gestionnaire régionale, Services d'architectural et de génie, TPSGC
PREETIPAL PAUL

Date/Date

2017/06/26

Drawn by/Dessine par

EK

Project No./No. du
projet **R.078666.001**

Sheet/Feuille

AD-14

Revision/
Revision

Pacific Rim – Washrooms – Mechanical Addendum #1

2017-06-26 (By Ivan Nikolic)

1. Refer to Mechanical Specifications, Section 22 10 10 Plumbing Pumps, Part 3 Execution, Item 3.3 Start-up, .1 General, Sub-Sub Item .1. Sub-Sub Item .1 should read:
.1 In accordance with Section 01 91 13 General Commissioning Requirements
2. Refer to Mechanical Specifications, Section 22 40 00 Plumbing Fixtures, Part 1 General, Item 1.4 Submittals. Sub Item .1 should read:
.1 Submittals in accordance with Section 01 11 55 General Instructions and 01 33 00 Submittal Procedures.
3. Refer to Mechanical Specifications, Section 22 40 00 Plumbing Fixtures, Part 1 General, Item 1.5 Closeout Submittals. Sub Item .1 should read:
.1 Submit maintenance data in accordance with Section 01 11 55 General Instructions and 01 77 00 Closeout Procedures.
4. Refer to Mechanical Specifications, Section 22 40 00 Plumbing Fixtures, Part 1 General, Item 1.7 Delivery Storage and Disposal, .1 Waste Management and Disposal. Sub Item .1 should read:
.1 Separate waste materials for recycling in accordance with Section 01 11 55 General Instructions and 01 74 19 Waste Management and Disposal.
5. Refer to Mechanical Specifications, Section 22 40 00 Plumbing Fixtures, Part 2 Products, 2.1 Manufactured Units, Item SS-1 Service Sink. Revise tag to read:
JS-1 Janitor Sink

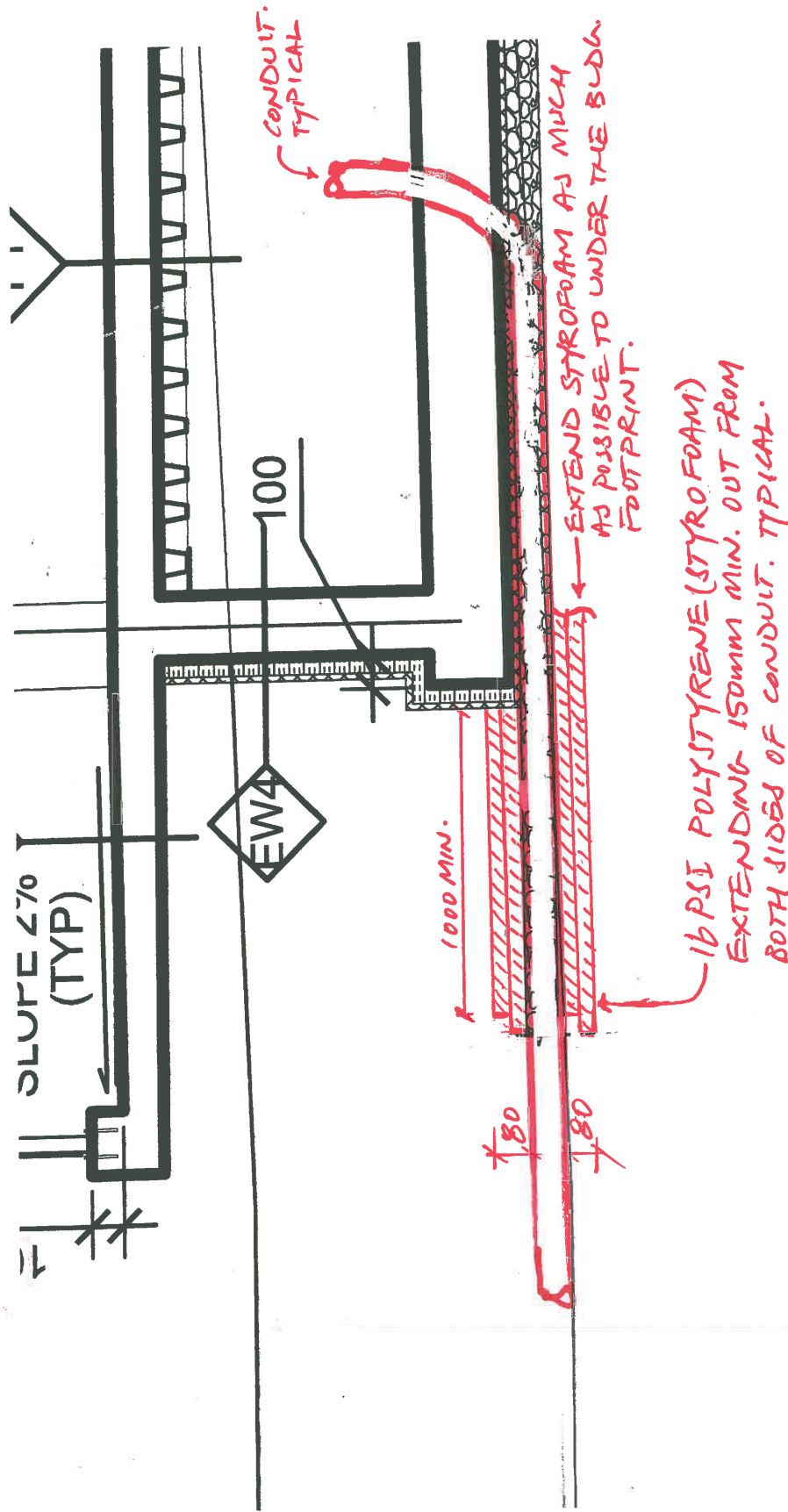
Additional Notes:

- a. One piece, precast terrazzo made of black and white marble chips in gray portland cement to produce a compressive strength not less than 3000 P.S.I. seven days after casting. Terrazzo surface shall be ground and polished with all air holes or pits grouted and excess removed. Shoulders shall be not less than 12" high outside and 10" inside at lowest wall. Shoulder width not less than 2" on all sides with a 1/4" pitch towards the inside. Standard drain body is stainless steel cast integrally and provides for a caulked lead connection not less than 1" deep to a 3" pipe. Provide stainless steel strainer, QDC quick drain connectors, Integral galvanized tiling flanges and Vandal proof drain. Terrazzo Mop Basins must be installed on a 12mm layer of mortar in order that the mop basin be level and to prevent cracking. Failure to install terrazzo without a mortar bed will void the warranty. Installations require a 6mm clearance between mop basin and wall.
- b. Provide 12mm reduced pressure backflow preventer, isolation valve and strainer for cold and hot water line installed 1500mm AFF above the sink. Stack backflow preventers on each other and follow all required clearances for service. Provide 25mm DWV copper drain line with funnel that will be terminated 25mm above janitor sink (rim elevation). The backflow

preventers should be installed on the opposite side from the faucet to allow use of the fixture.

6. Refer to Mechanical Specifications, Section 22 40 00 Plumbing Fixtures, Part 2 Products, 2.1 Manufactured Units, Item SH-1:
SH-1 Additional Note: Shower head should be with arm and adjustable flange and vandal resistant. Acceptable material: Symmons 4-221.
7. Refer to Mechanical Specifications, Section 22 40 00 Plumbing Fixtures, Part 2 Products, 2.1 Manufactured Units, Item KS-1:
KS-1 Additional Note: Acceptable material: American Standard 7100.271H.
8. Refer to Mechanical Specifications, Section 22 40 00 Plumbing Fixtures, Part 2 Products, 2.1 Manufactured Units, Item TD-1 Sloped Drain System.
Delete this fixture from specifications.
TD-1 Sloped Trench Drain System N/A
9. Refer to Mechanical Specifications, Section 22 40 00 Plumbing Fixtures, Part 2 Products, 2.1 Manufactured Units, Item TP Trap Primer and plumbing drawings P-1/2/3/4/5/6.
Add: Provide 12mm CW supply line connected to water closet line. This line is not shown on drawings. Install multiply trap primers in Service room. Install trap primer lines in concrete toping to each individual floor drain.
10. Refer to Mechanical Specifications, Section 23 05 00 Common Work Results – Mechanical, Part 1 General, Item 1.2 Submittals, Sub-Item .5 Closeout Submittals, Item .1. Sub Item .1 should read:
.1 Provide operation and maintenance data for incorporation into manual specified in Sections 01 77 00 Closeout Procedures and 01 91 51 Building Management Manual (BMM).
11. Refer to Mechanical Specifications, Section 23 05 00 Common Work Results – Mechanical, Part 1 General, Item 1.8 Maintenance. Item .1 should read:
.1 Furnish spare parts in accordance with Section 01 77 00 Closeout Procedures as indicated in the detail product specification clauses. Also refer to Appendix 5.
12. Refer to Mechanical Specifications, Section 23 05 00 Common Work Results – Mechanical, Part 1 General, Item 1.9 Delivery Storage and Handling, .1 Waste Management and Disposal. Item .1 should read:
.1 Construction/Demolition Waste Management and Disposal: separate waste materials for reuse and recycling in accordance with Section 01 74 19 Waste Management Disposal.
13. Refer to Mechanical Specifications, Section 23 09 33 Electric and Electronic Control System for Mechanical Systems, Part 3 Execution, Item 3.5 Kitchen Faucet Control. Add item .2. Item .2 should read:
.2 Provide total of six (6) spare solenoid valves for kitchen sinks (KS-1).

14. Refer to Plumbing Drawings P-5 & P-6: Add General Note 5 & 6. Drawing notes should read:
 5. Connect drain port of access hatch to sanitary drain (upstream from P-Trap). Use 25mm drain connection. Typical for all access hatches.
 6. Provide trap primes (Typical).
15. Refer to Plumbing Drawings P-1, 2, 3, 4, 5 & 6 [Piping Schematic]:
 - .1 Provide Water Hammer Arrestors (not shown on schematic) for all plumbing fixtures with flush valves. The hammer arrestors should be installed at location recommended by supplier. Consider service clearance prior installation.
16. Refer to Plumbing Drawings P-5 and P-6 (Green Point #1 and Green Point #4):
 1. Provide flexible rubber couplings (approved for underground use) at U/G gravity sanitary pipe and vents (GP#1 – Typical of 5 and GP#4 – Typical of 3). Pipe sizes as shown on drawings.
 2. Provide minimum 80mm thick of 16 psi polystyrene Styrofoam above and below U/G pumped sanitary pipes (Typical for GP#1). Styrofoam shall extend minimum 150mm horizontally from either side of pipe.
 3. Transition between civil/plumbing to occur outside the building. Transition from HDPE (civil) to ductile iron (plumbing) within 300mm from crawlspace wall.
17. Refer to Plumbing Drawings P-5 (Green Point #1):
 1. Provide 50mm vent line serving floor drain in crawl space Run line parallel to 50mm sump vent to the ceiling space of ground level.
 2. Provide trap prime connection to floor drain serving crawl space. Typical for all floor drains.



TYPICAL ELEC. CONDUIT INSTALLATION UNDER BLDG. SLAB

ESK-1