

DRAWING NOTES: BLOCK CELLS

- ① DESK: EXISTING DESK, RETAIN IN PLACE
- ② REPLACE WALL GRILL: REMOVE EXISTING WELDED WALL GRILL AND PROVIDE NEW GRILL TO MATCH EXISTING. PROVIDE SHOP DRAWINGS.
- ③ EXISTING LIGHT FIXTURE: REMOVE EXISTING LIGHT FIXTURE. INFILL CONCRETE BLOCK BEHIND FIXTURE. PROVIDE METAL PLATE AS DETAILED BEHIND DEMOLISHED LIGHT FIXTURE. PROVIDE NEW SECURE LIGHT WHERE SHOWN (SEE NOTE 28).
- ④ SINK/WATERCLOSET: REMOVE AND REINSTATE FOR INSTALLATION OF NEW STAINLESS STEEL SHEET AS DETAILED. PROVIDE NEW WATER CLOSET/SINK AS REQUIRED BY MECHANICAL. DO NOT PAINT.
- ⑤ HOOK AND MIRROR: RETAIN EXISTING HOOK AND MIRROR IN PLACE. PROTECT ALL EXISTING SURFACES TO REMAIN.
- ⑥ FLOOR GRILL: RETAIN EXISTING FLOOR GRILL. REMOVE EXISTING PAINT ON GRILL. PROVIDE NEW BOX TYPE FLOOR GRILL AS DETAILED REFER TO 1/A801.
- ⑦ SMOKE DETECTOR: REPLACE EXISTING SMOKE DETECTOR. REMOVE EXISTING SECURITY SEALANT AND REPLACE. DO NOT PAINT
- ⑧ EXISTING FLOOR BOX GRILL: RETAIN EXISTING FLOOR BOX TYPE GRILL
- ⑨ EXISTING SHELVING: RETAIN EXISTING SHELVING THROUGHOUT
- ⑩ EXISTING RADIO/SWITCH: REMOVE INSET ELECTRICAL BOX. INFILL ALL VOIDS WITH CONCRETE BLOCK. PROVIDE METAL PLATE AS DETAILED.
- ⑪ PANIC BUTTON: RETAIN EXISTING PANIC BUTTON IN PLACE. REMOVE EXISTING SECURITY SEALANT AND REPLACE. DO NOT PAINT
- ⑫ FLUSH BUTTON: REMOVE AND REINSTATE FOR INSTALLATION OF NEW STAINLESS STEEL SHEET AS DETAILED. PROVIDE NEW AS REQUIRED BY MECHANICAL. REMOVE EXISTING SECURITY SEALANT AND REPLACE. DO NOT PAINT
- ⑬ SPRINKLER: EXISTING SPRINKLER REFER TO MECHANICAL FOR LOCATION OF REPLACEMENT. REMOVE EXISTING SECURITY SEALANT AND REPLACE. DO NOT PAINT SPRINKLER.
- ⑭ REPLACE EXISTING BED: REMOVE EXISTING BED INCLUDING RODS, BARS, FASTENERS AND ALL ASSOCIATED METAL WORKS.
- PATCH AND INFILL CONCRETE BLOCK/CONCRETE FLOOR/CEILING/STEEL PLATING FROM REMOVED METAL BARS, FASTENERS, AND REMOVED WELDS.
- REPLACE WITH NEW SINGLE BED AS SHOWN IN A803. REMOVE PAINT FOR LOCATION OF NEW BED AT CEILING AND WALL.
- ⑮ REPLACE EXISTING FURNITURE DESK: REMOVE EXISTING FURNITURE DESK AND REPLACE WITH NEW DESK AS DETAILED IN A802. LOCATE NEW DESK AS SHOWN
- ⑯ PAINT REMOVAL: REMOVE ALL EXISTING LEAD PAINT WHERE SHOWN AND AS REQUIRED FOR NEW/DEMOLITION WORK. (AREA'S OF PAINT REMOVAL ARE SOLID 50% HATCH) EXISTING PAINT TO BE REMOVED TO ALLOW WELDING/GRINDING OF NEW FURNITURE, GRILLS, LIGHTS ETC. COORDINATE REMOVAL OF EXISTING PAINT WITH NEW CONSTRUCTION AND WELDER. REMOVE ALL PAINT AT DOOR FRAMES.
- ⑰ EXISTING ELECTRICAL OUTLET: REMOVE EXISTING ELECTRICAL OUTLETS, WIRING ETC. INFILL CONC. BLOCK WALL BEHIND. PRESUME AN AREA OF 610X610 FOR INFILL. PROVIDE NEW STEEL SHEET OVER ENTIRE AREA.
- ⑱ WINDOW: RETAIN EXISTING SECURE WINDOW. DO NOT PAINT
- ⑲ NEW STAINLESS STEEL SHEET: REMOVE EXISTING STEEL PLATING, PATCH AND INFILL CONCRETE BLOCK WALL BEHIND. PROVIDE NEW STAINLESS STEEL SHEET TO 1100mm ABOVE FINISHED FLOOR. SHEET TO LAP BEHIND ALL FIXTURES AND BUTTONS. WELD ALL JOINTS. REFER TO STRUCTURAL FOR DETAILS.
- ⑳ CELL DOOR: EXISTING CELL DOOR TO REMAIN. REFER TO DETAILS FOR MODIFICATIONS. REFER TO A707.
- ㉑ GRAB BAR: RETAIN EXISTING GRAB BAR. REMOVE AND REINSTATE AS REQUIRED FOR NEW/REMIDIAL WORK. I
- ㉒ RESERVED
- ㉓ BED: RETAIN EXISTING BED
- ㉔ NEW STEEL PLATING: EXISTING PARGED/CONCRETE BLOCK WALL. PROVIDE NEW STEEL PLATING ON ENTIRE WALL AS DETAILED. REFER STRUCTURAL AND DETAILS

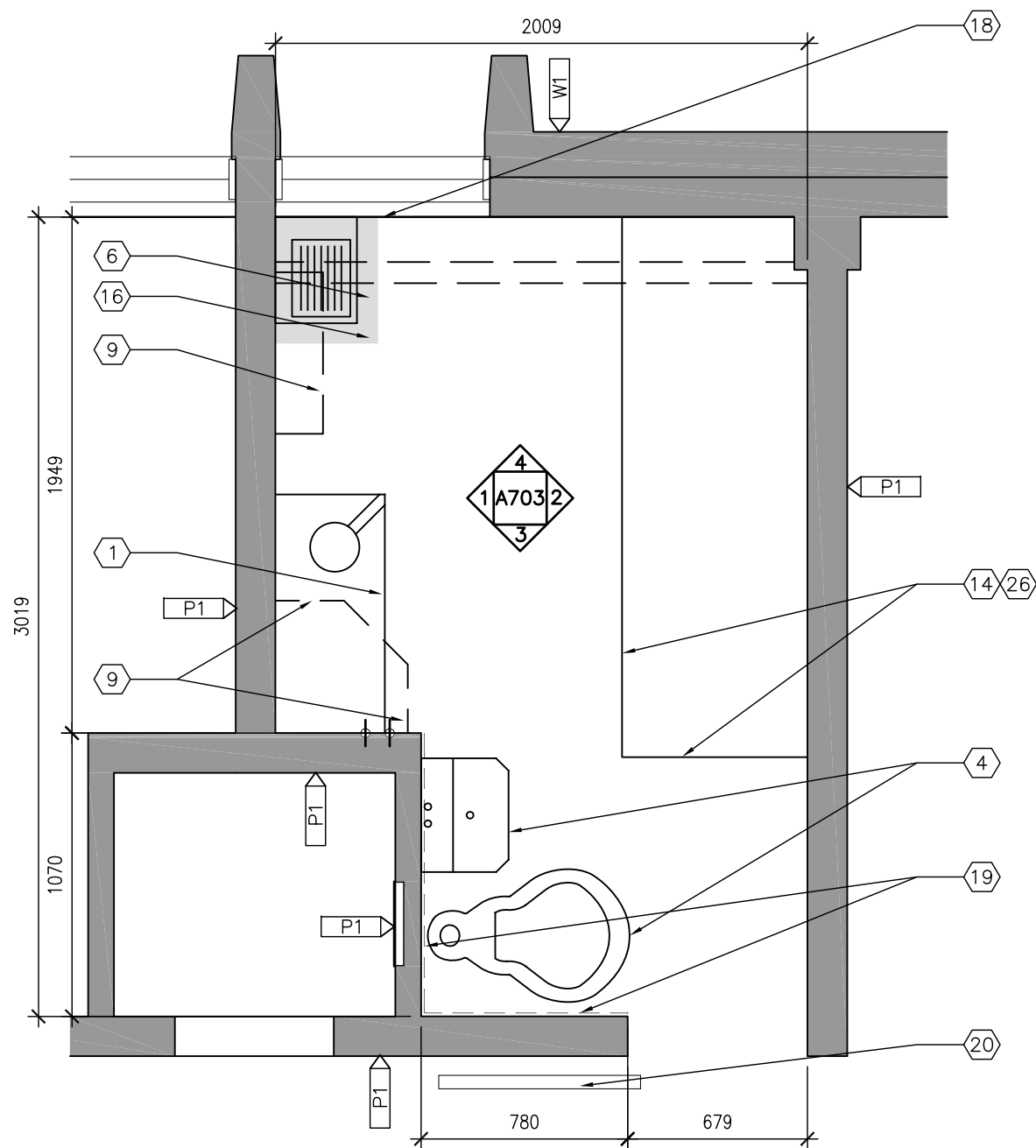
- ㉕ RESERVED
- ㉖ NEW BED AS DETAILED. REFER TO A803 AND STRUCTURAL.
- ㉗ NEW OUTLETS: PROVIDE NEW SECURE OUTLETS. REFER TO ELECTRICAL.
- ㉘ NEW SECURE LIGHT FIXTURE: PROVIDE NEW SECURE LIGHT FIXTURE IN LOCATION AS SHOWN
- ㉙ MODIFY EXISTING LIGHT SWITCH: REMOVE EXISTING LIGHT FIXTURE. PROVIDE NEW SECURE LIGHT SWITCH WITH SECURITY PLATE. REFER TO ELECTRICAL. PROVIDE SECURITY SEALANT.

TYPICAL NOTES

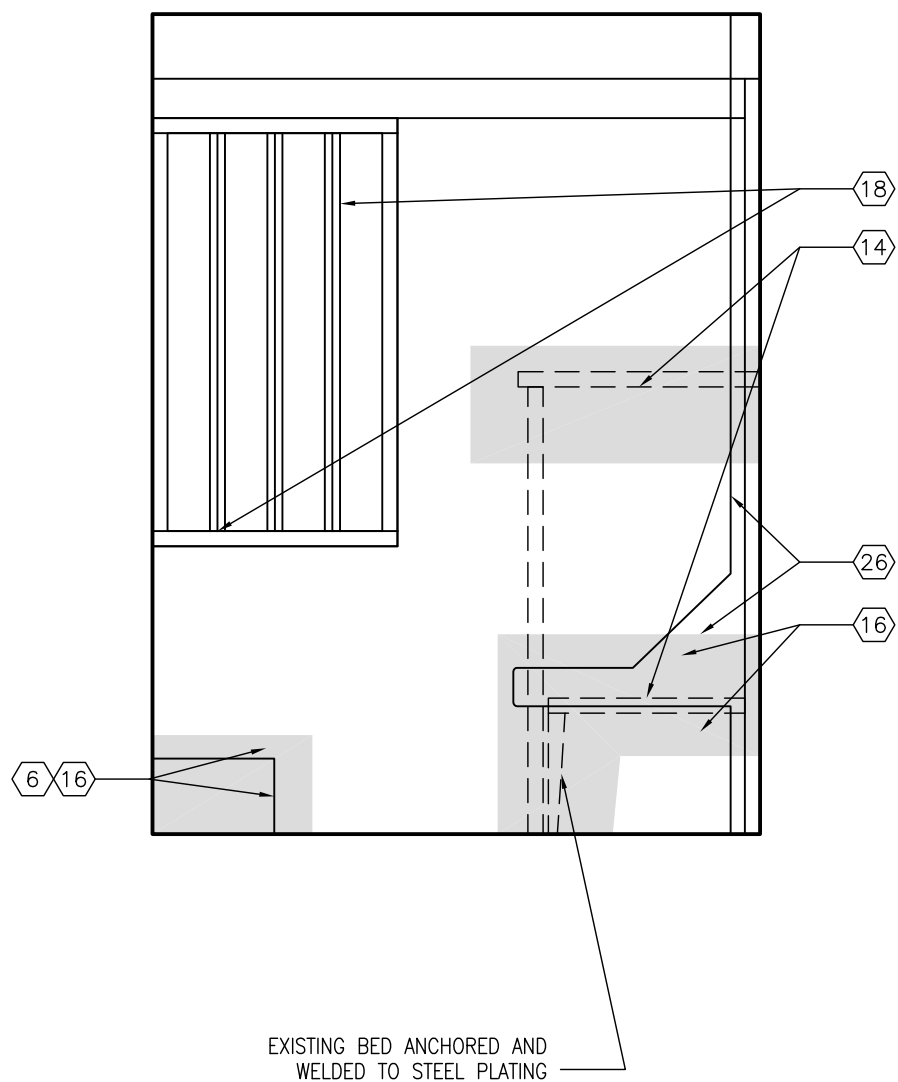
- A) NEW PAINT: TYPICAL: PROVIDE NEW PAINT ON ALL SHELVING, WALLS, CEILING, FURNITURE, EXPOSED STEEL, SECURITY SEALANT THROUGHOUT. PROVIDE PRIMER AND PAINT AS SPECIFIED.
- B) TYPICAL: EXISTING PAINT CLEANING/ PREPARATION: WASH AND PREPARE ALL EXISTING PAINTED SURFACES FOR NEW PAINT AS SPECIFIED.
- C) PARTITION CONSTRUCTION: ALL CELL PARTITION WALLS ARE CONCRETE BLOCK COMPLETE WITH STEEL PLATING UNLESS NOTED OTHERWISE.

PARTITION/WALL TYPES

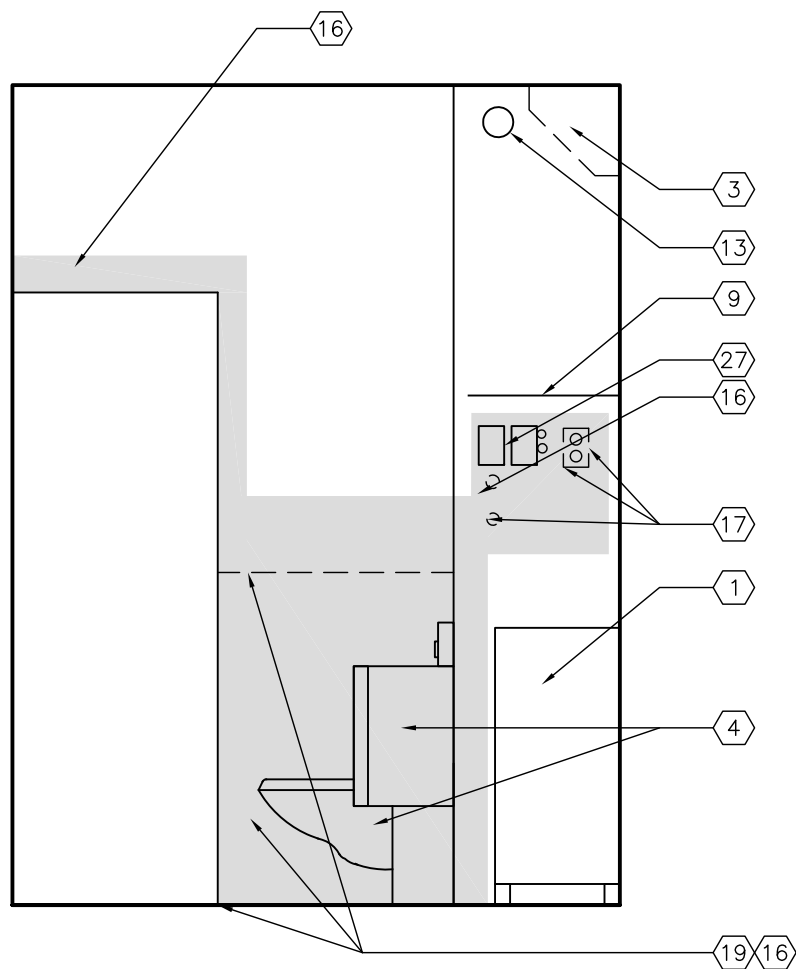
- P1 EXISTING STEEL CLAD CONCRETE BLOCK WALL. REVISE EXISTING WALL AS SHOWN AND NOTED. CONCEALED SIDES OF WALL WITHOUT STEEL PANELS.
- P2 EXISTING CONCRETE BLOCK/PARGED CONCRETE BLOCK WALL. PROVIDE STEEL PLATING/SHEATHING AS NOTED AND DETAILED. REFER TO STRUCTURAL.
- W1 EXTERIOR WALL: INSIDE FACE PARGED CONCRETE BLOCK.



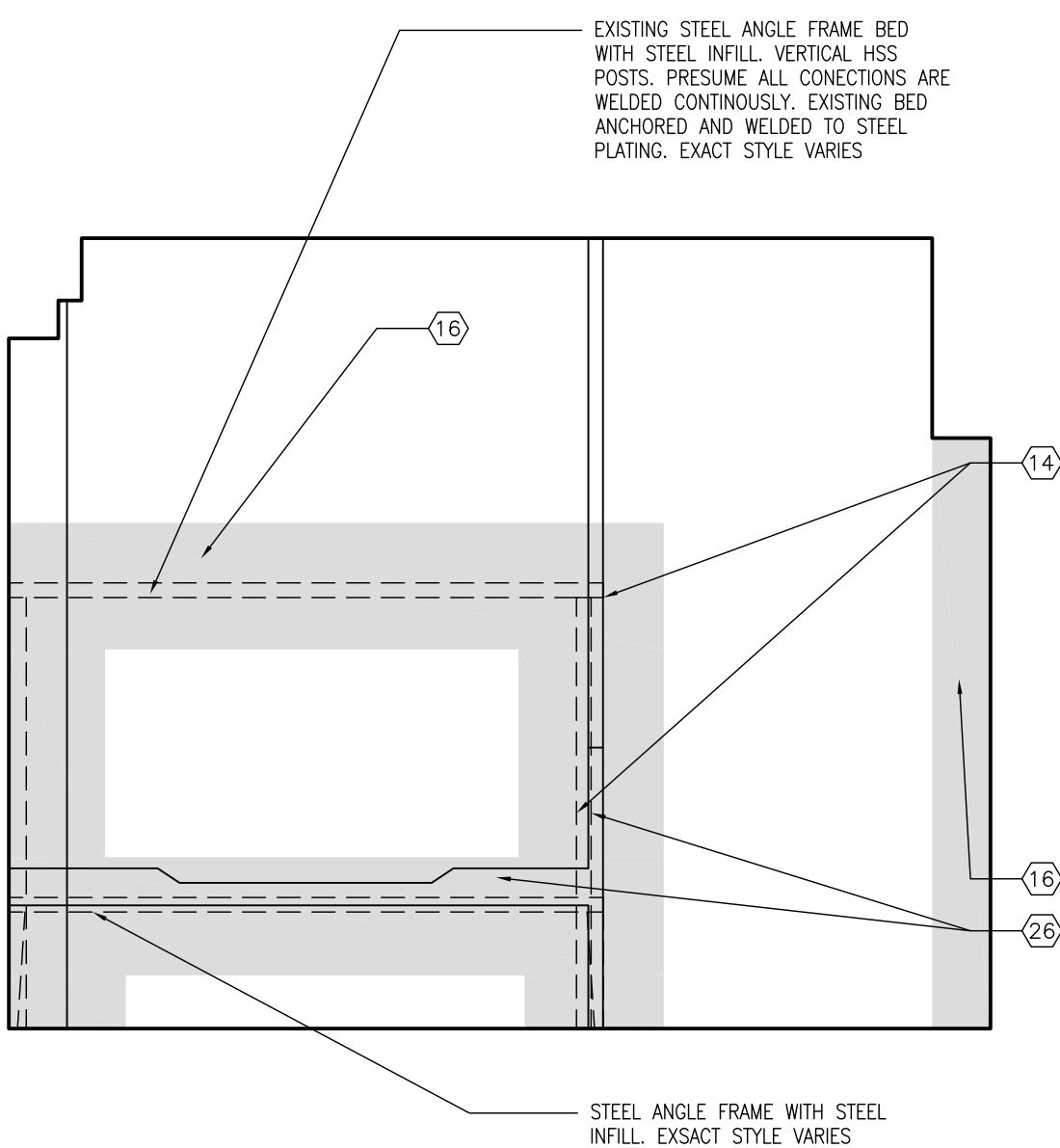
5 F2 TYPICAL CELL PLAN
A703 1:25



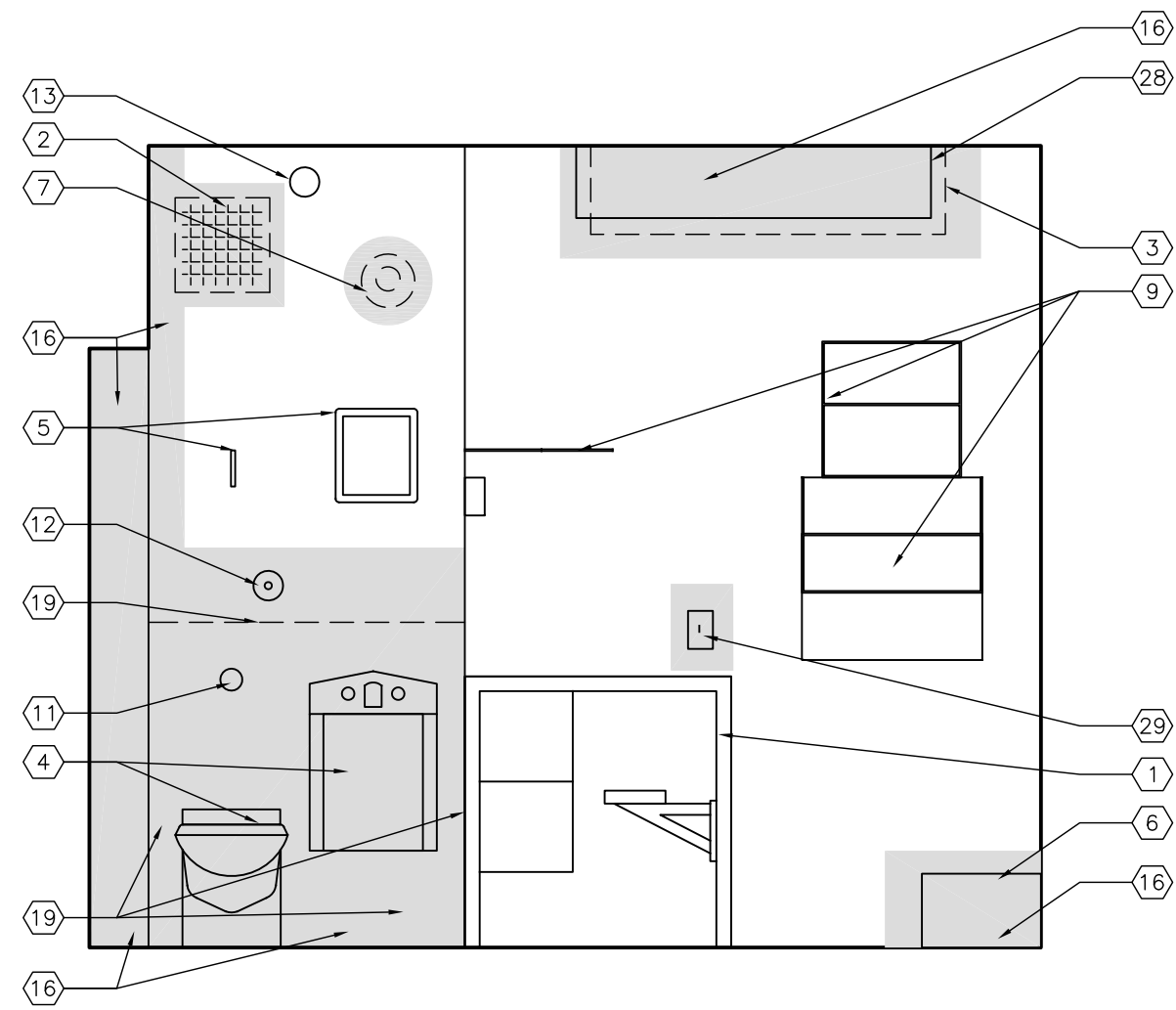
4 F2 TYPICAL CELL ELEVATION
A703 1:25



3 F2 TYPICAL CELL ELEVATION
A703 1:25

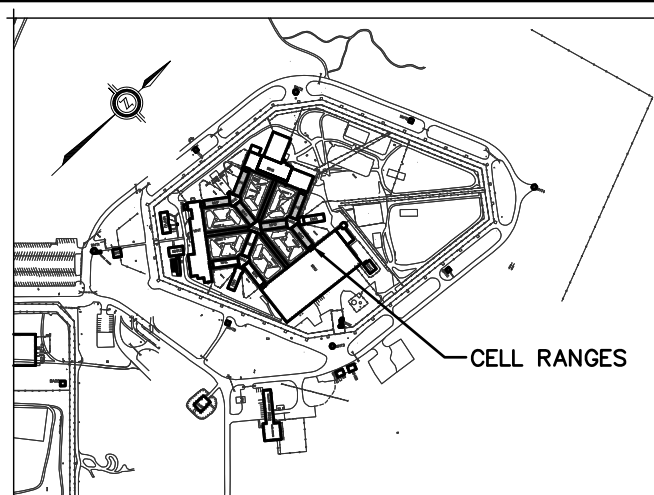


2 F2 TYPICAL CELL ELEVATION
A703 1:25



1 F2 TYPICAL CELL ELEVATION
A703 1:25

CONTRACTOR IS RESPONSIBLE TO VERIFY ALL SITE DIMENSIONS



KEY PLAN
PLAN-REPÈRE



04		
03		
02		
01	ISSUED FOR TENDER	Feb 8th,2013
revision		date

A	A detail no. no. du détail	A
C	B location drawing no. no. de localisation	B
	C drawing no. no. du dessin	C

project CORRECTIONAL SERVICE CANADA
MILLHAVEN INSTITUTION
RANGE UPGRADES
E UNITS - KINGSTON, ONTARIO

drawing dessin

F2 CELL BLOCK
TYPICAL CELL

Designed By	COLE+ASSOCIATES	Conçu par	
Date		(yyyy/mm/dd)	
Drawn By	C+A	Dessiné par	
Date		(yyyy/mm/dd)	
Reviewed By	T.S.	Examiné par	
Date		(yyyy/mm/dd)	
Approved By	D.K.C	Approuvé par	
Date		(yyyy/mm/dd)	
Tender	PWGSC	Soumission	
Project Manager		Administrateur de projets	
Project no.		No. du projet	
	R.059827.002		
Drawing no.		No. du dessin	
	A703		